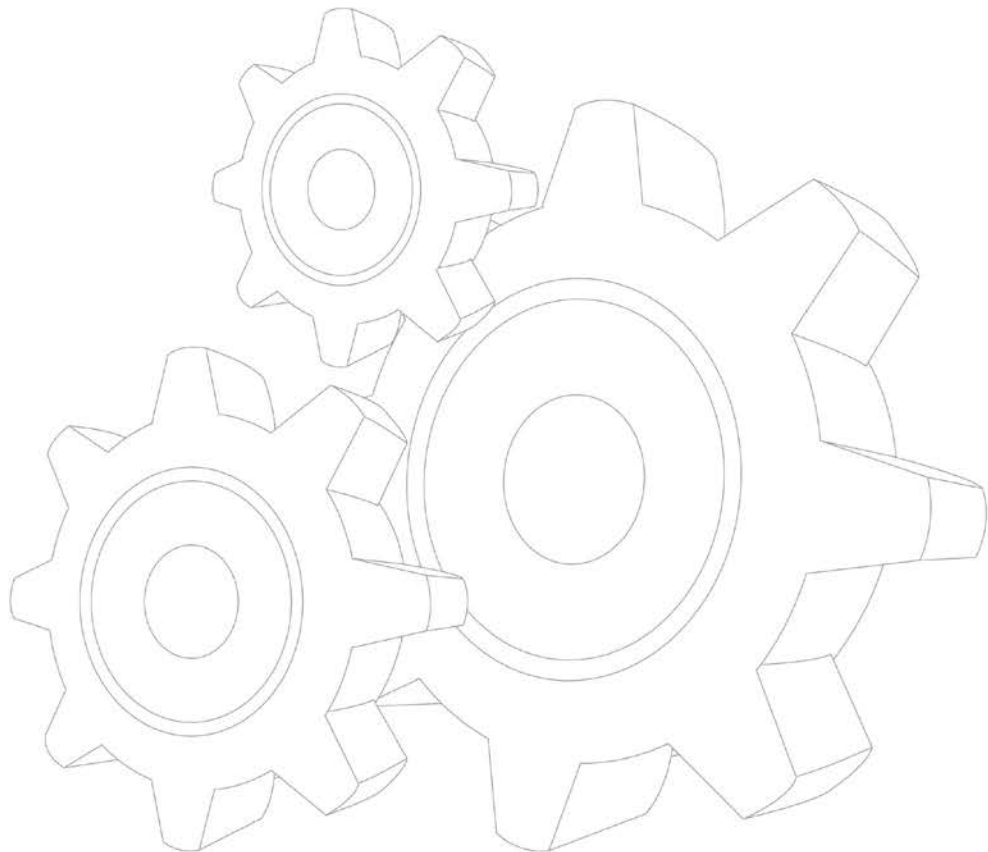




SQ12ZK3Q 随车起重机备件图册

SQ12ZK3Q Truck-mounted Crane SPARE PARTS CATALOGUE





目次 Contents

前 言.....	I
Preface	II
351400648 SQ12ZK3Q 随车起重机 Loader crane.....	1
352100649 回转机座总成 Slewing base.....	3
352100233 转台总成 Turmtable assembly.....	7
358100718 回转机构Slewing mechanism.....	11
358200099 回转分配器Slewing distributor.....	17
352100236 第一变幅油缸Derricking cylinder I.....	19
352100303 上车操作系统Up control system.....	21
352100303 下车操作系统Down control system.....	23
352100696 左支腿油缸 Left leg cylinder	25
352100697 水平油缸 Horizontal cylinder.....	27
352100719 右支腿油缸 Right active leg.....	29
352100268 内臂总成 Inner boom.....	31
352100267 第二变幅油缸 Derricking cylinder II.....	33
352100268 外臂总成 Outer boom.....	35
352100272 基本臂 Base boom	37
352100273 一节伸缩臂 Boom extension 1	39
352100274 二节伸缩臂 Boom extension 2	41
352100275 三节伸缩臂 Boom extension 3	43
352100218 第一伸缩油缸 Telescopic cylinder I.....	45
352100276 第二伸缩油缸 Telescopic cylinder II.....	47
352100277 第三伸缩油缸 Telescopic cylinder III	49
352100284 第一连杆机构 Joint pole I.....	51
352100286 第二连杆机构 Joint pole II.....	53
352100288 防回转下落机构 Anti-slewing mechanism.....	55
352100967 液压布管图 Hydraulic system layout.....	57
803007927 SSPHB50 双向平衡阀 Dual-balance valve.....	65
803007927 SPHBB50 单向平衡阀 Balance valve	67
803008012 08441103023500B双向平衡阀 Dual-balance valve	69
803008012 SO-K8L-J7 双向液压锁 Hydraulic lock.....	71
803008084 HC-D10/6(OOYYOYO)多路阀 Multichannel valve	73
总页数.....	75



前 言

衷心感谢您对徐工品牌的信赖和认可并使用徐工生产的 SQ12ZK3Q 随车起重机。

本图册提供了“产品名称”列为备件的结构及装配关系，旨在方便备件工程师和用户对起重机更好的维修和保养。本图册应配合产品使用说明书共同使用，请您严格按照备件图册进行操作、维护，使“产品名称”处于最佳工作状态。

为方便用户备件检索，本图册已将“产品名称”的大型结构件及整体采购件拆分至最小可维修单元，在分解图后附有明细表与所示零件一一对应。其中“产品名称(物料编码)”等无拆分单元，因此本图册未对其进行详尽的分析说明。

另外，本图册未涉及 SQ12ZK3Q 随车起重机内容，相关内容请参阅 SQ12ZK3Q 随车起重机图册。

本备件图册及其它随车技术文件是“产品名称”的组成部分，请在产品寿命期内随车妥善保存，共同作为您使用该“产品名称”的必须依据。

我公司保留随技术改进而不断修订《备件图册》内容的权利，如有变更，恕不另行通知，望各位用户予以理解。

2012年11月第1版



Preface

Firstly, thank you for selecting SQ12ZK3Q Truck-mounted Crane designed and manufactured by XCMG.

The aim of supplying the catalogue is to facilitate maintenance and service to the SQ12ZK3Q Truck-mounted Crane. It should be used together with operation manual and maintenance manual. Please strictly follow the instructions in operation manual and maintenance manual for operation and maintenance.

There are details for assembly of parts in it, Which large structural parts and integrated parts are disassembled into minor maintenance units. There is a list following each detail for user looking up spare parts. Please refer to carrier spare parts catalogue for contents involved with carrier spare parts.

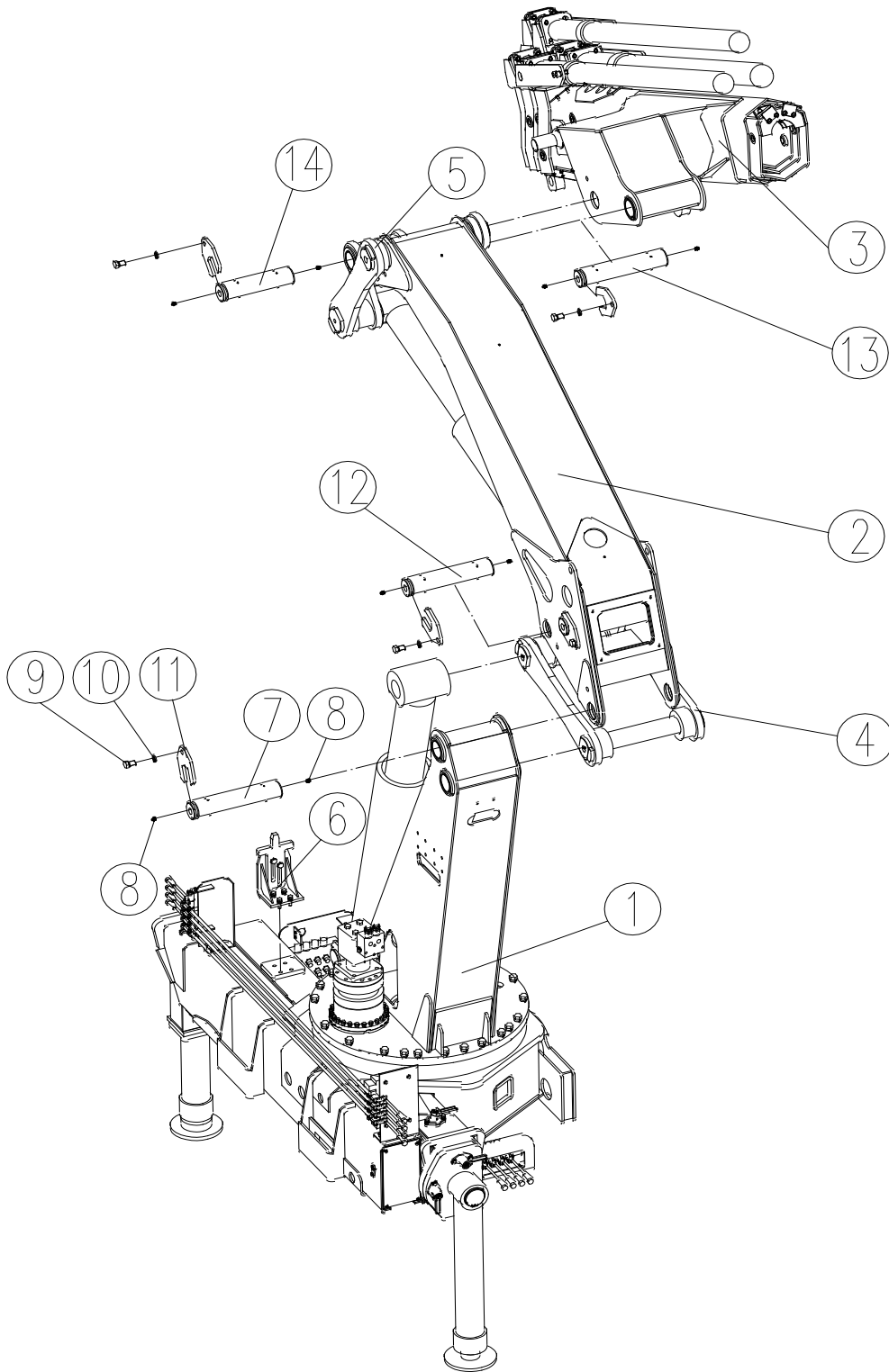
The manual is an integral part of SQ12ZK3Q Truck-mounted Crane. Please keep them handy in the driver's or operator's cab with the supplied technical documents and operate the machine according to instruction in them.

We reserve the right to modify the catalogue for improvement without notice.

11/2012 First Edition

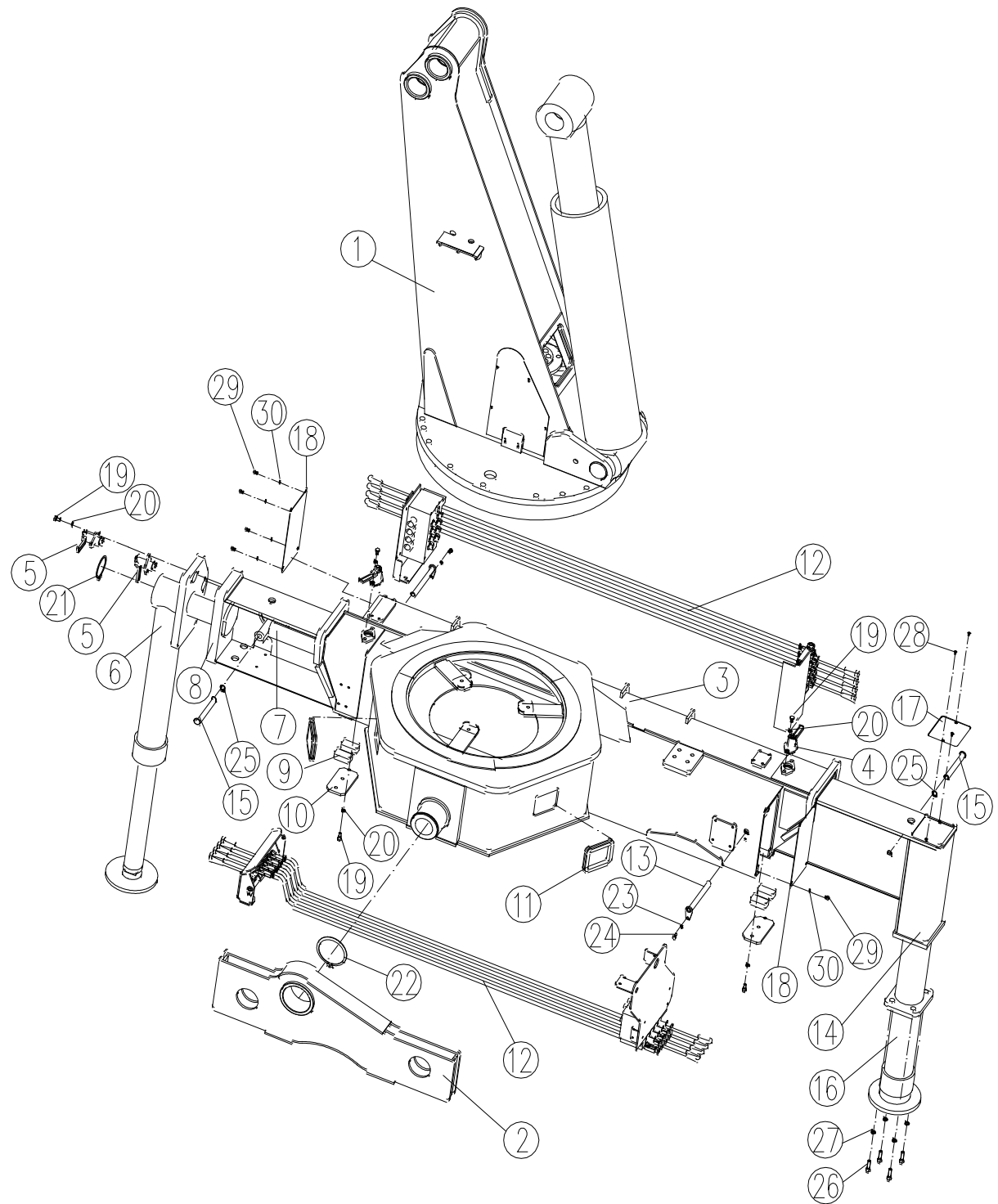


351400648 SQ12ZK3Q 随车起重机 Loader crane





352100649 回转机座总成 Slewing base



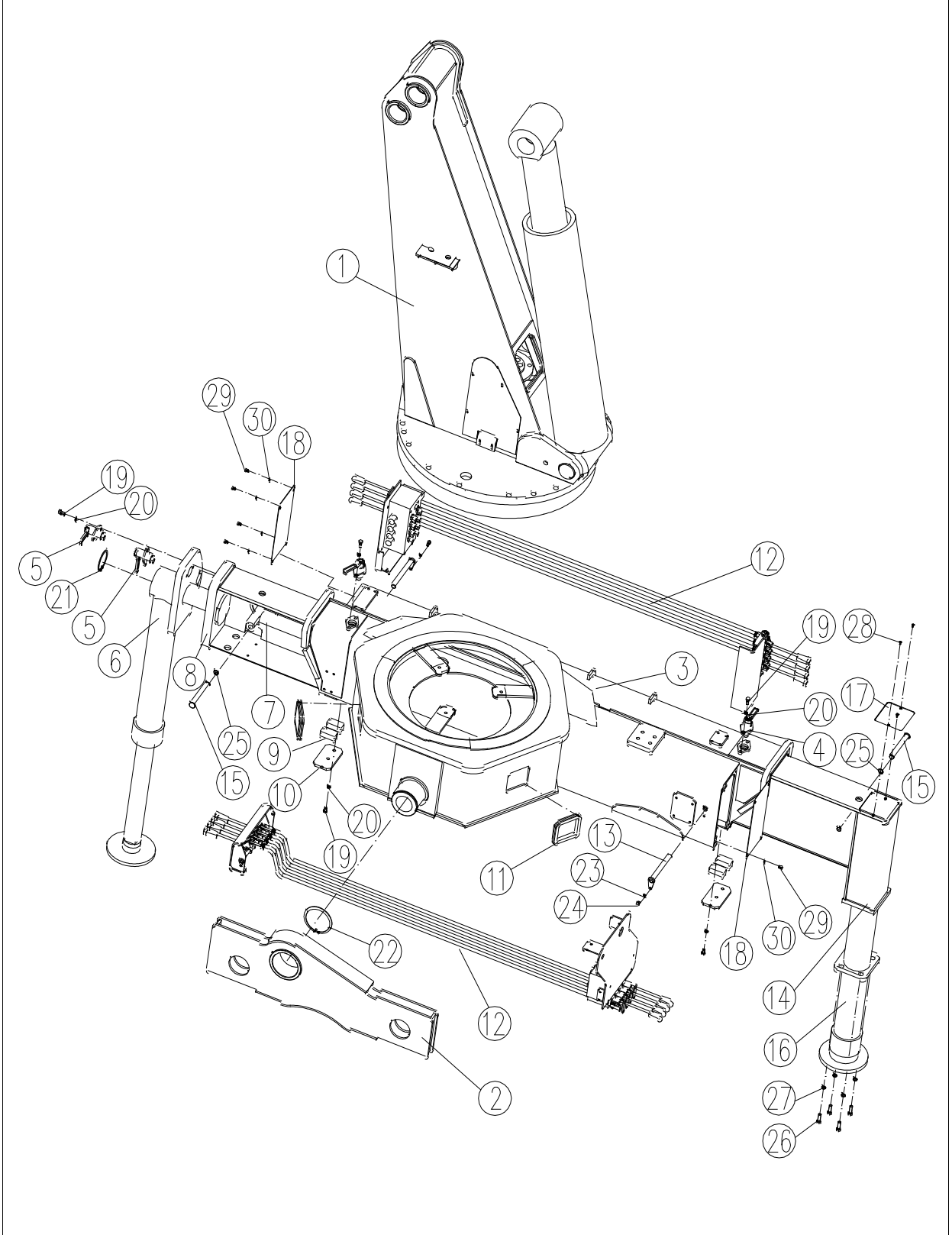


352100649 回转机座总成 Slewing base

序号 No.	物料代码 Part number	名称 Part Name	推荐数量 Advised Q' ty	备注 Remark
1	352100233	转台总成 Turmtable assembly	1	
2	352100263	支架 Bracket	1	
3	352100655	机座体 Base	1	
4	359400177	锁紧总成 Lock	2	
5	359400178	锁紧总成 Lock	2	
6	352100696	左支腿油缸 Left leg cylinder	1	
7	352100697	水平油缸 Horizontal cylinder	2	
8	352100698	左活动支腿 Left active leg	1	
9	352100650	滑块 Slide pad	4	
10	352100651	挡板 Baffle	2	
11	359400089	橡胶套 Rubber boot	2	
12	352100303	操作系统 Control system	1	
13	352100710	销轴 Pin shaft	2	
14	352100711	右活动支腿 Right leg cylinder	1	
15	352100652	销轴 Pin shaft	2	
16	352100719	右支腿油缸 Right active leg	1	
17	352100653	盖板 Cover board	1	
18	352100654	封板 Blanking plate	2	
19	805300014	垫圈 10 Cushion ring	14	GB/T93-1987
20	805000714	螺栓 M10×20 Bolt	14	GB/T5783-2000
21	805401244	挡圈 90 Check ring	1	GB/T894.2-1986
22	805403063	挡圈 125 Check ring	1	GB/T894.2-1986

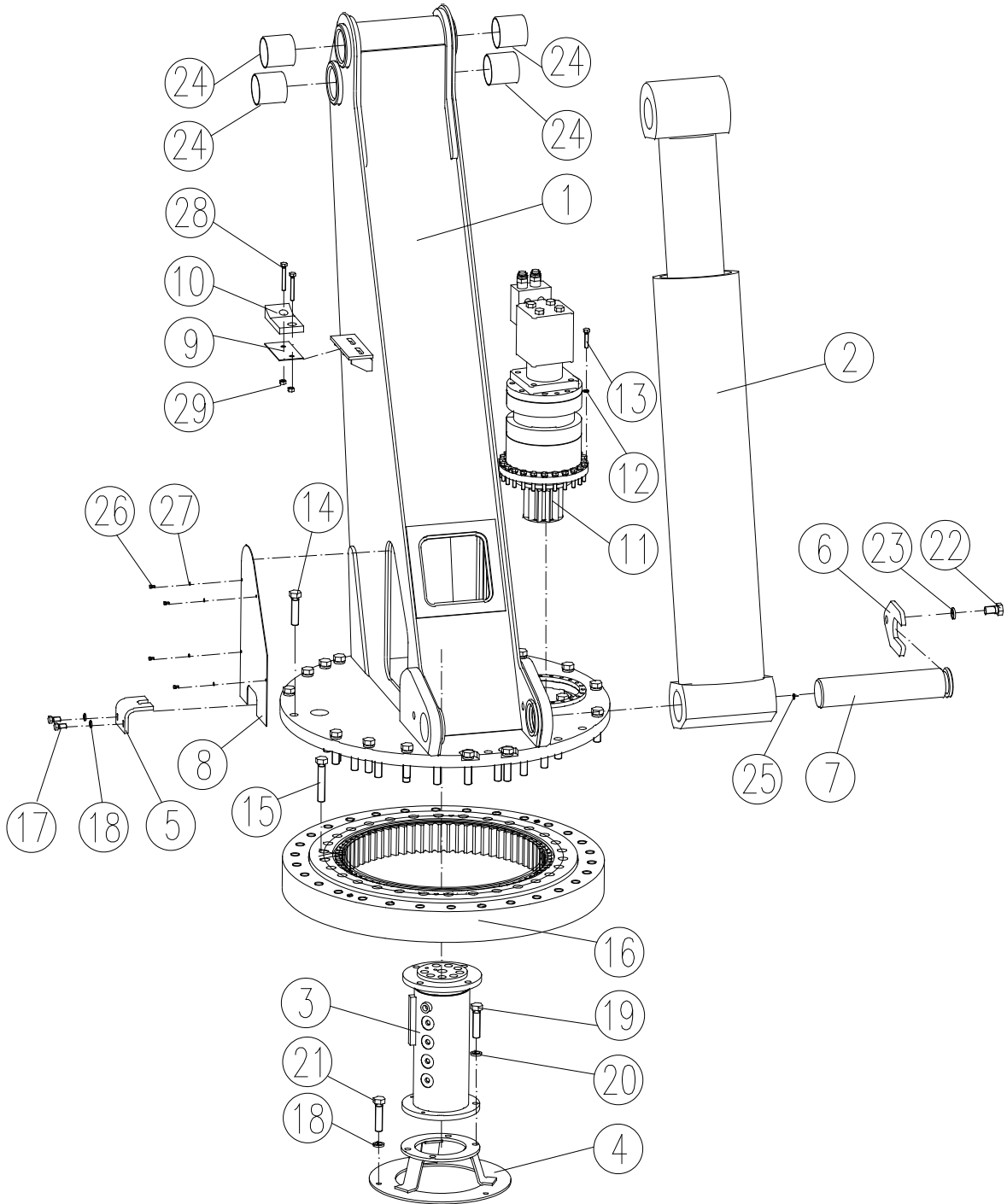


352100649 回转机座总成 Slewing base





352100233 转台总成 Turmtable assembly



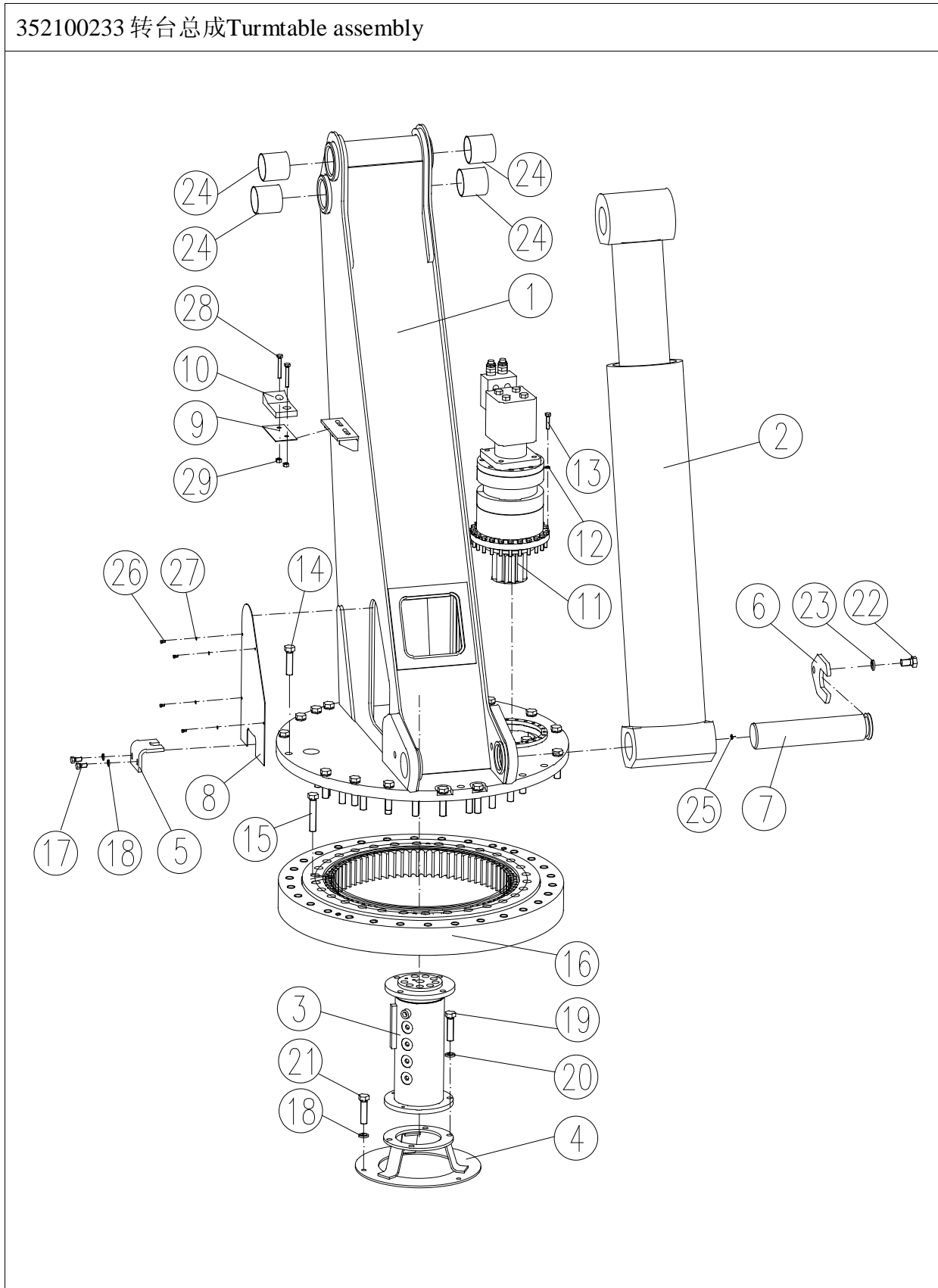


352100233 转台总成 Turmtable assembly

序号 No.	物料代码 Part number	名称 Part Name	推荐数量 Advised Q' ty	备注 Remark
1	352100234	转台结构 Turmtable assembly	1	
2	352100236	第一变幅油缸 Derricking cylinder I	1	
3	358200099	回转分配器 Slewing distributor	1	
4	352100043	支撑架 Bracket	1	
5	352100032	定位板 Location plate	1	
6	359400018	卡板 Clip board	1	
7	352100017	轴 Shaft	1	
8	352100040	封板 Blanking plate	1	
9	352100049	调整垫板 Adjustable cushion	13	
10	352100050	支撑块 Support block	1	
11	358100718	回转机构 Slewing mechanism	1	
12	805302803	冻结制锁垫圈 10 Cushion ring	24	
13	805100142	螺钉 M10×45 Screw	24	GB/T70.1-2008
14	805000507	螺栓 M20×80 Screw	21	GB/T5783-2000
15	805004559	螺栓 M20×110 Bolt	24	GB/T5783-2000
16	800513787	回转支承 Slewing ring	1	
17	805000074	螺栓 M12×20 Bolt	2	GB/T5783-2000
18	805300018	垫圈 12 Cushion ring	5	GB/T93-1987
19	805000038	螺栓 M16×30 Bolt	2	GB/T5783-2000
20	805300011	垫圈 16 Cushion ring	2	GB/T93-1987
21	805000048	螺栓 M12×35 Bolt	3	GB/T5783-2000
22	805005576	螺栓 M20×35 Bolt	1	GB/T5783-2000
23	805300023	垫圈 20 Cushion ring	1	GB/T93-1987

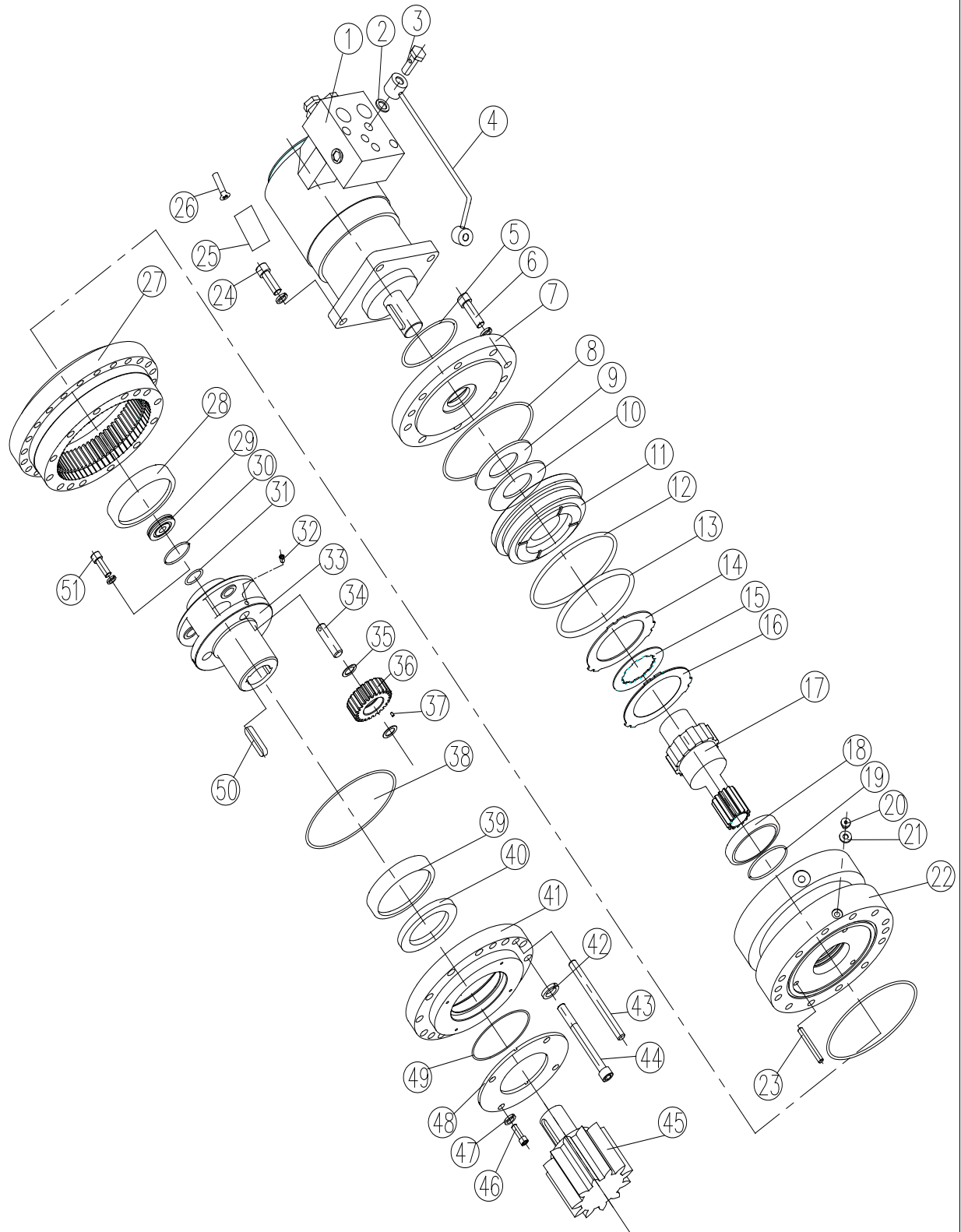


352100233 转台总成 Turmtable assembly





358100718 回转机构Slewing mechanism



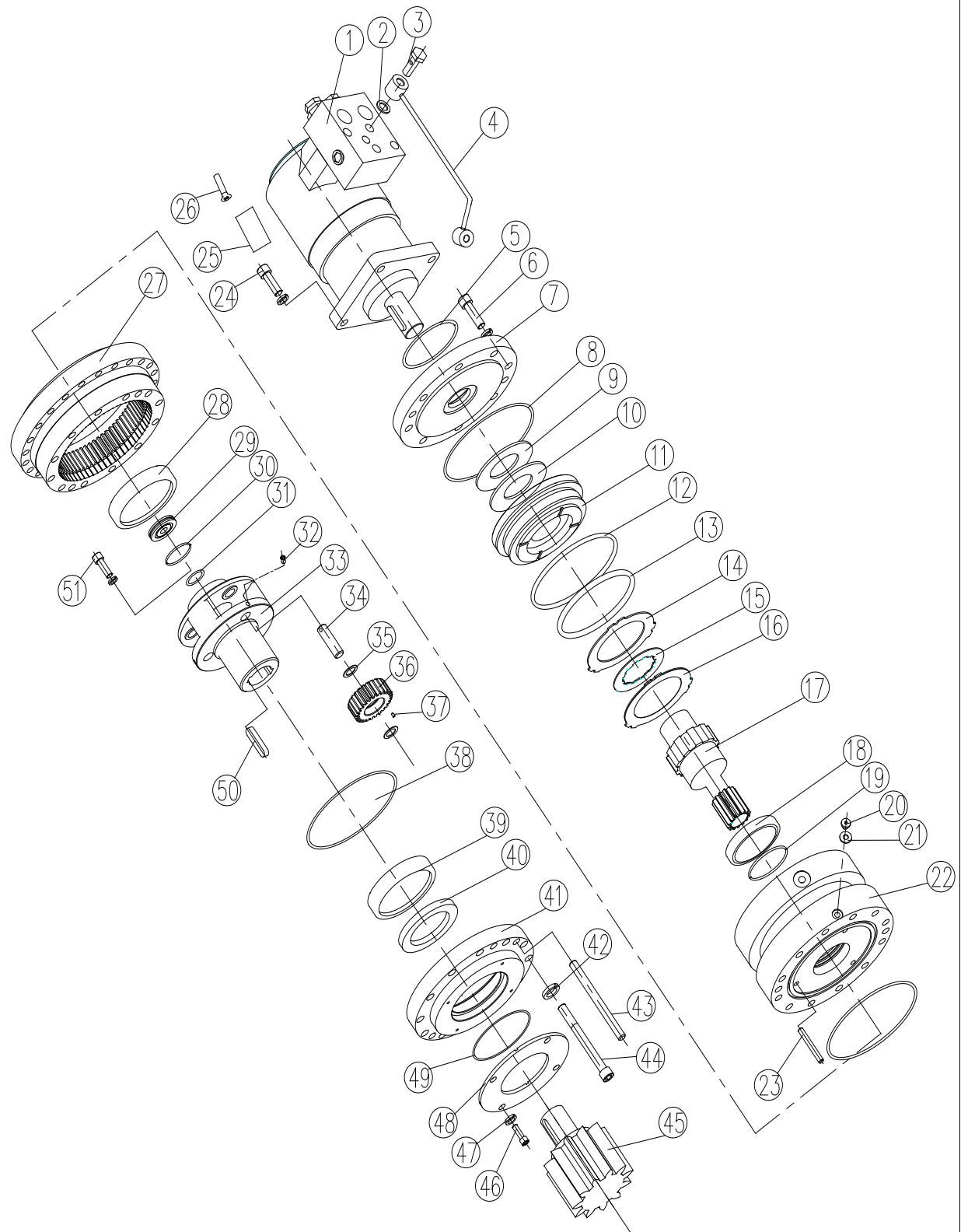


358100718 回转机构 Slewing mechanism

序号 No.	物料代码 Part number	名称 Part Name	推荐数量 Advised Q' ty	备注 Remark
1	803007844	马达 Motor	1	BM4-320P1A1Y-K3
2	803174307	组合密封 Assembled seal	4	JB/T982-1977
3	—	管接头 10 Tube joint	2	JB/T978-1977
4	358100107	油管 Steel tube	1	
5	803175867	O 形圈 90×3.55 O-ring	1	
6	805103599	螺钉 M12×35 Screw	16	GB/T70.1-2000
7	358100206	连接盘 Connected dish	1	
8	803174912	O 形圈 154×3 O-ring	2	
9	358100079	调整垫 Adjusted cushion	1	
10	801702764	碟簧 Dish reed		GB/T1972-2005
11	358100067	制动活塞 Brake piston	1	
12	803175183	O 形圈 145×5.3 Brake piston	1	
13	803175182	O 形圈 125×7 O-ring	1	
14	358100114	制动侧定片 Brake slice	2	
15	358100115	制动动片 Brake dynamic slice	5	
16	358100116	制动中定片 Brake slice	4	
17	358100726	太阳轮轴 Sun wheel shaft	1	
18	800513881	滚动轴承 Bearing	1	GB/T276-1994
19	803174993	O 形圈 65×2.5 O-ring	1	
20	803174308	螺塞 M8×1 Screw thread plug	2	JB/ZQ4444-1997
21	—	组合密封 8 Assembled seal	4	JB/T982-1977
22	358100727	制动器壳体 Arrester shell	1	
23	805603781	销 8×60 Pin	3	GB/T119.1-2000
24	805100047	螺钉 M12×40 Screw	8	GB/T70.1-2008



358100718 回转机构Slewing mechanism



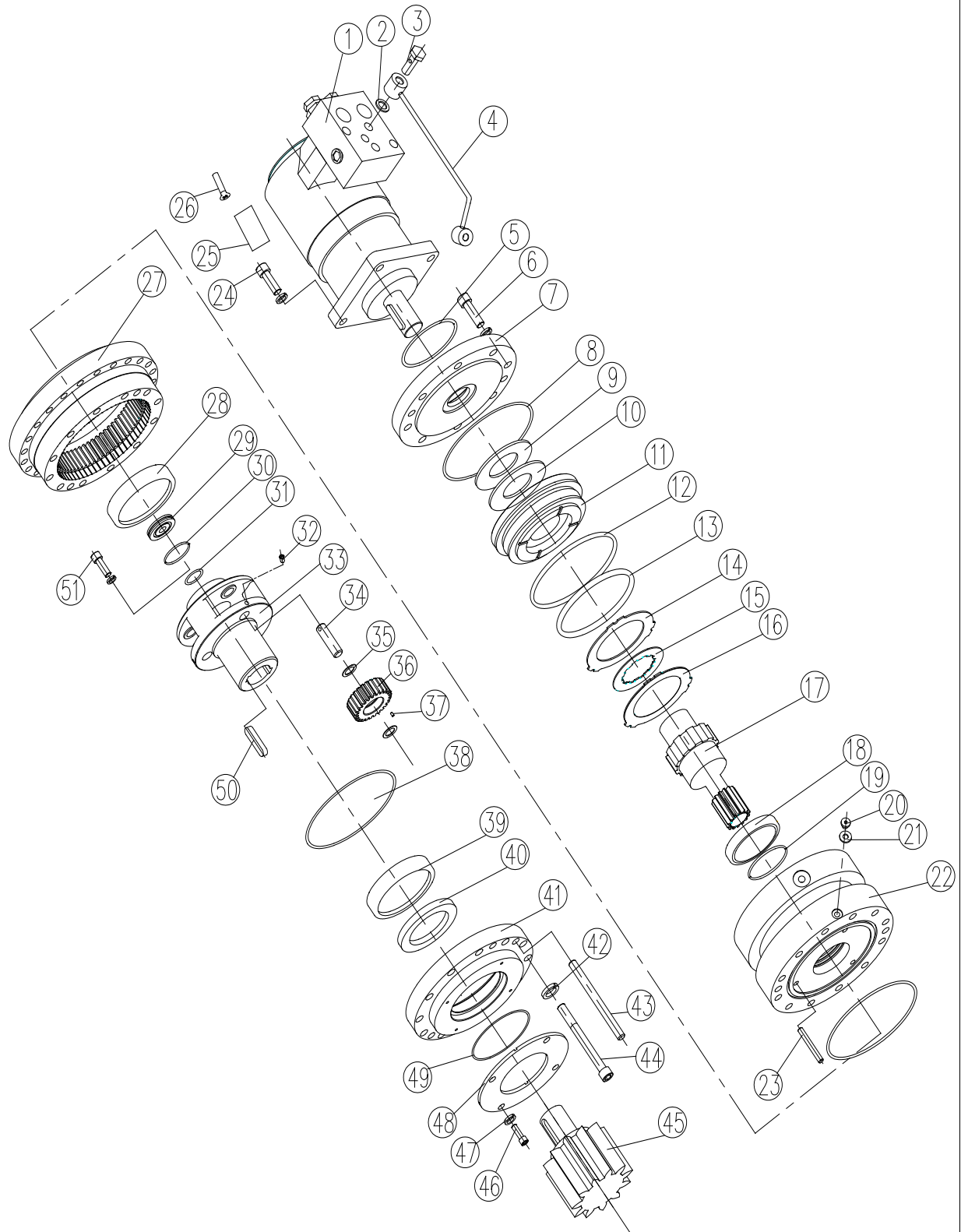


358100718 回转机构 Slewing mechanism

序号 No.	物料代码 Part number	名称 Part Name	推荐数量 Advised Q' ty	备注 Remark
25	358100135	减速机标牌 Reducer nameplate	1	
26	805502345	铆钉 2.5×6 Rivet	4	GB/T12618.1-2006
27	358100724	内齿轮 Inner gear	1	
28	800513737	轴承 Bearing	1	GB/T297-1994
29	—	压盖 Press cover board	1	
30	—	O 形圈 50×5 O-ring	1	GB/T3452.1-1992
31	—	O 形圈 125×2.65 O-ring	1	
32	805100217	螺钉 M6×12 Screw	3	GB/T79-2000
33	358100719	行星架 Planet bracket	1	
34	358100720	行星轮轴 Planet wheel shaft	3	
35	358100193	行星轮垫圈 Planet wheel cushion	6	
36	358100080	行星轮 Planet wheel	3	
37	800513739	圆柱滚子 Roller	108	GB/T4661-2002
38	803175184	O 形圈 167×13 O-ring	1	
39	800513738	轴承 Bearing	1	GB/T297-1994
40	803184632	骨架油封 Oil seal	1	
41	358100723	下端盖 Down cover	1	
42	805300018	垫圈 12 Spring gasket	36	GB/T93-1987
43	805604151	销 12×150 Pin	2	GB/T120.2-2000
44	805100292	螺钉 M12×100 Screw	12	GB/T70.1-2008
45	358100721	回转小齿轮 Small slewing gear	1	
46	805300067	垫圈 8 Spring cushion	2	JB/T982-1977

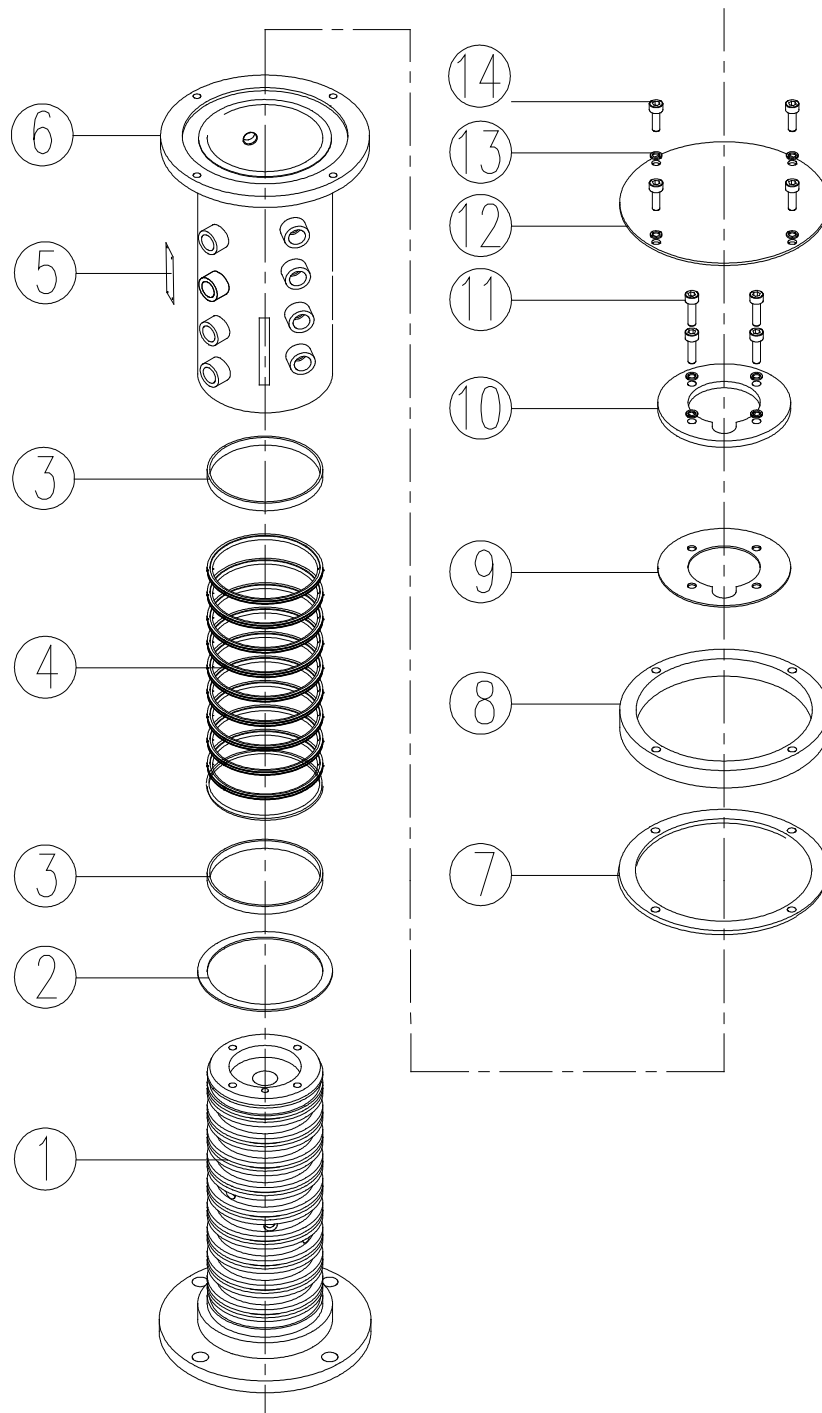


358100718 回转机构Slewing mechanism



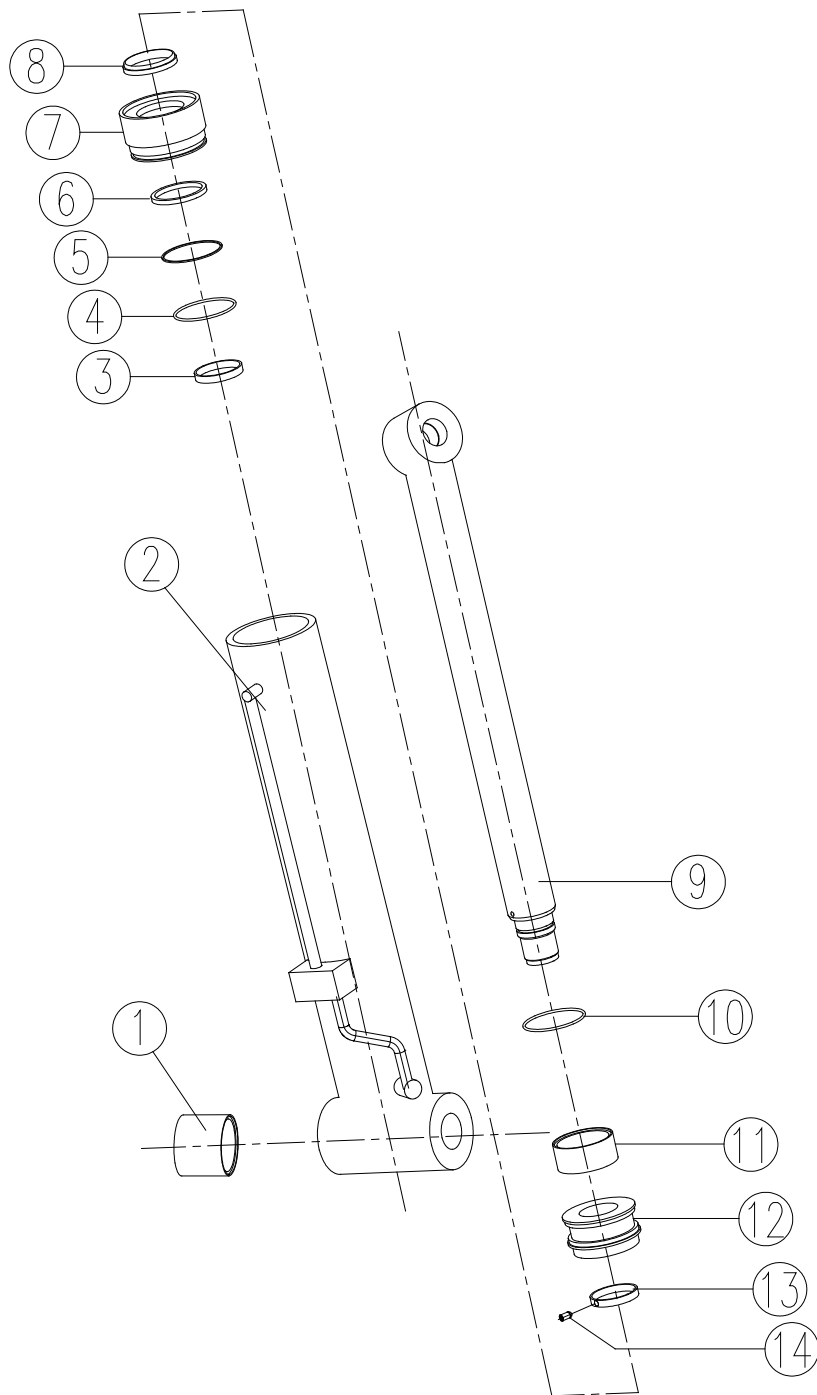


358200099 回转分配器Slewing distributor



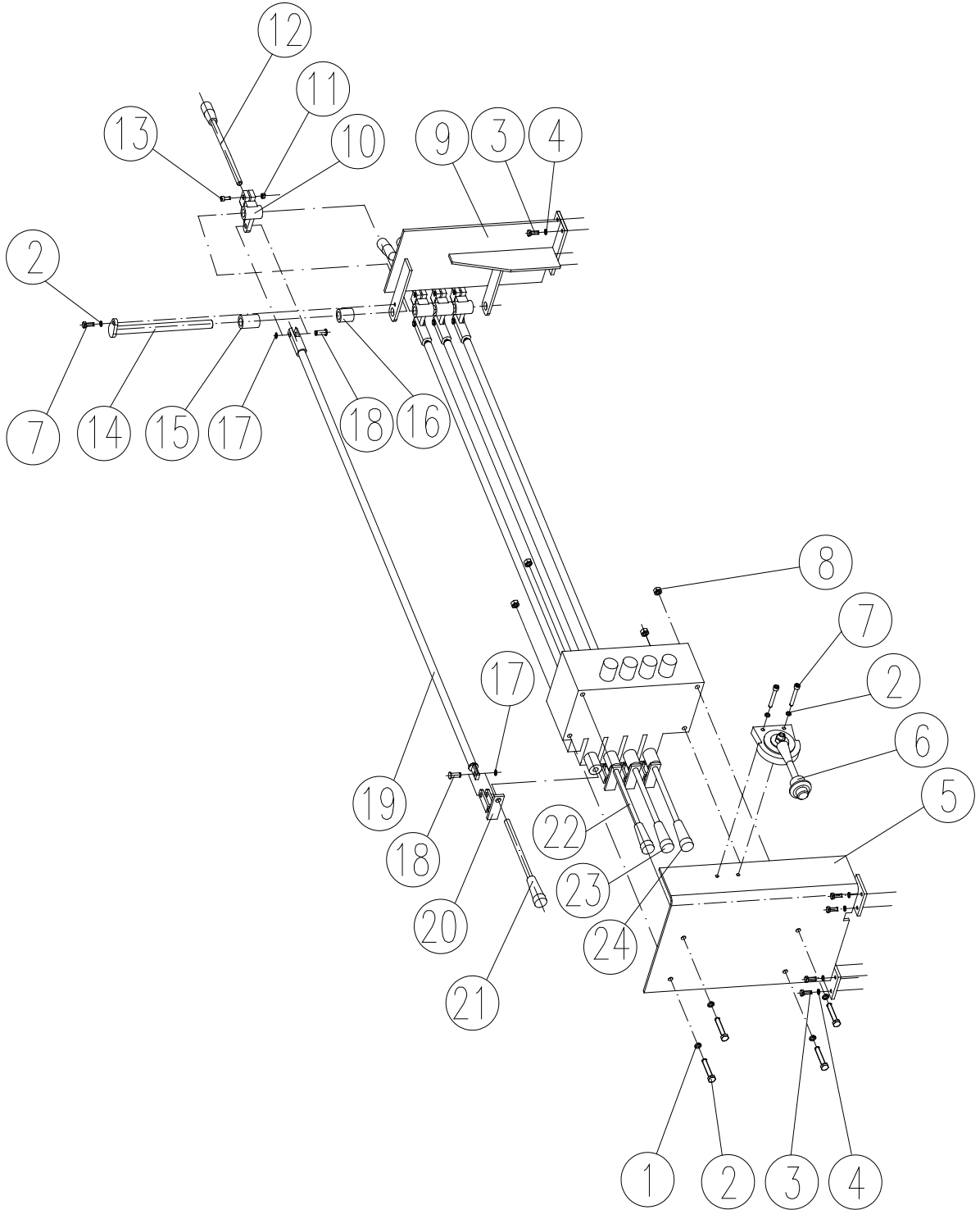


352100236 第一变幅油缸Derricking cylinder I





352100303 上车操作系统Up control system



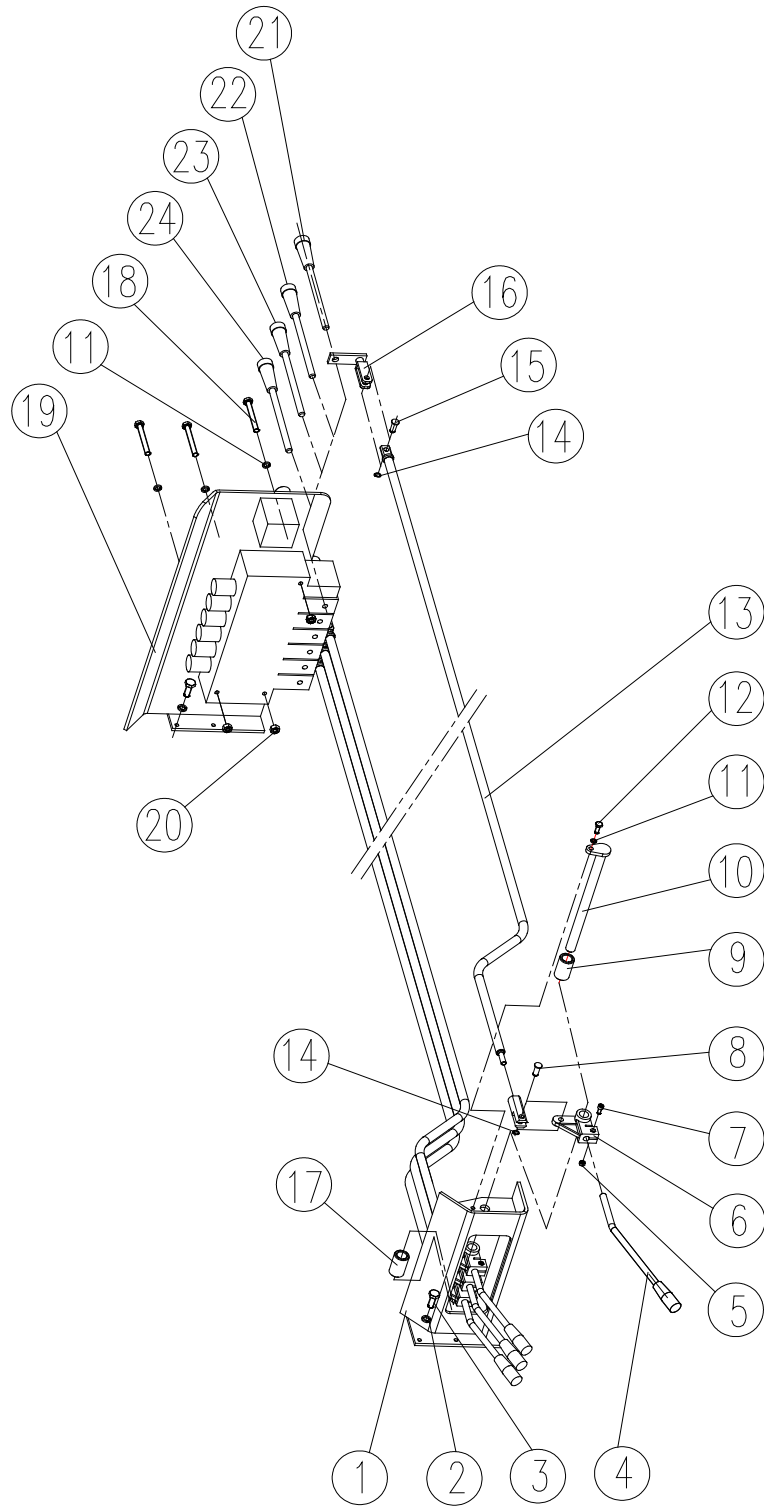


352100303 上车操作系统 Up control system

序号 No.	物料代码 Part number	名称 Part Name	推荐数量 Advised Q' ty	备注 Remark
1	805300030	垫圈 6 Cushion ring	4	GB/T93-1987
2	805000165	螺栓 M8×65 Bolt	6	
3	805000018	螺栓 M8×20 Bolt	12	GB/T5783-2000
4	805300010	垫圈 8 Cushion ring	12	GB/T93-1987
5	352100221	阀架 II Check value retainer II	1	
6	800305966	软轴 Soft shaft	1	
7	805000322	螺钉 M6×16 Screw	2	GB/T70.1-2000
8	805200053	螺母 M6 Nut	4	GB/T6170-2000
9	352100219	操纵架 II Control bracket II	1	
10	359400100	拨叉 Fork	4	
11	805200046	螺母 M5 Nut	4	GB/T6170-2000
12	359400147	操纵手柄 Operation handle	4	
13	805100082	螺钉 M5×12 Screw	4	GB/T70.1-2000
14	352100217	连接轴 Joint shaft	1	
15	352100306	隔套 Spacer bush	1	
16	352100307	隔套 Spacer bush	1	
17	805400033	轴用弹性挡圈 8 Check ring	8	GB/T894.1-1986
18	359400133	销轴 Pin shaft	8	
19	352100323	连杆 Linker	4	
20	359400118	拨叉 Fork	4	
21	359400154	TB 10 079 手柄 Handle	1	
22	359400155	TB 10 080 手柄 Handle	1	
23	359400156	TB 10 081 手柄 Handle	1	
24	359400158	TB 10 083 手柄 Handle	1	



352100303 下车操作系统Down control system



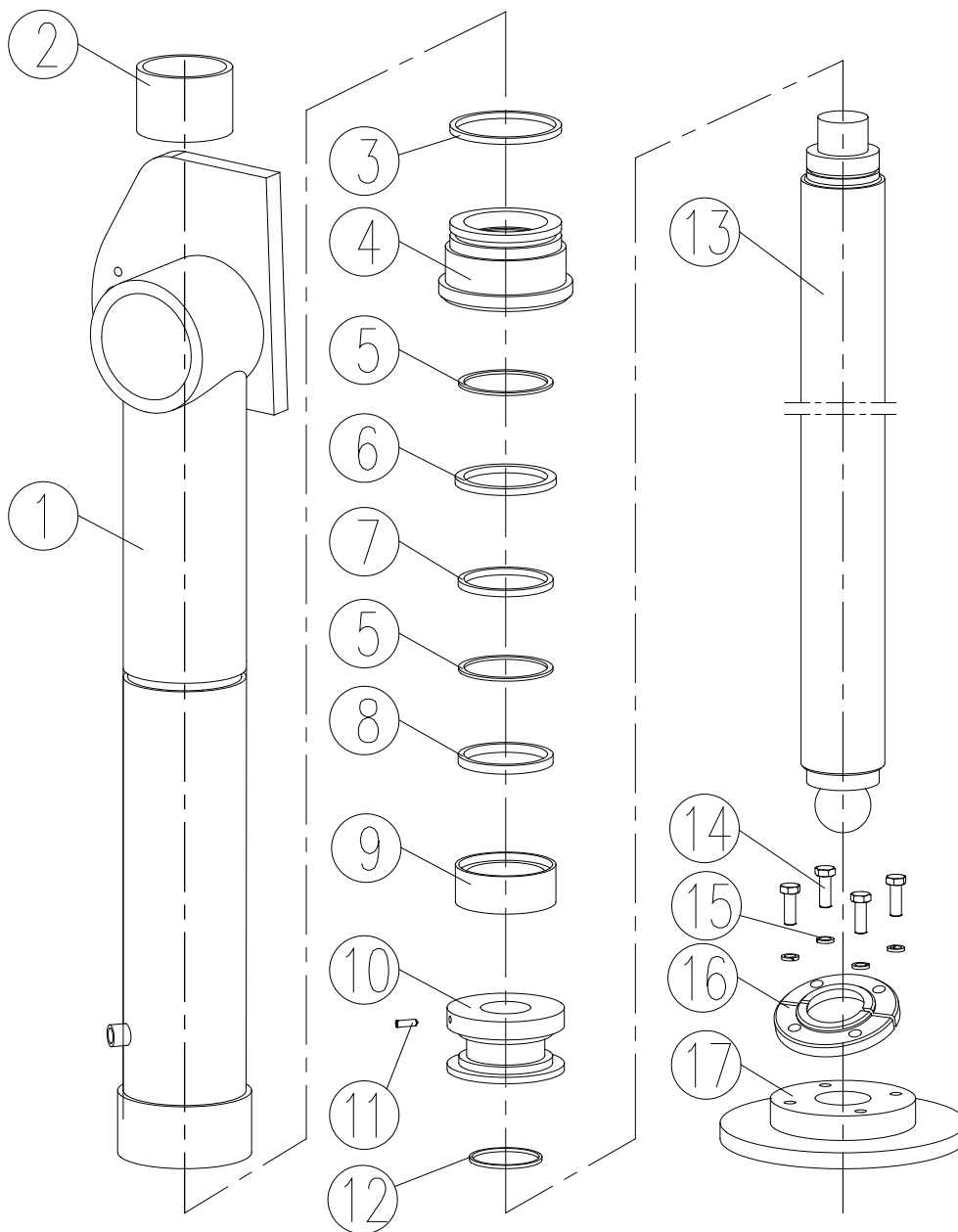


352100303 下车操作系统 Down control system

序号 No.	物料代码 Part number	名称 Part Name	推荐数量 Advised Q' ty	备注 Remark
1	352100220	操纵架 I Control bracket I	1	
2	805300010	垫圈 8 Cushion ring	12	GB/T93-1987
3	805000018	螺栓 M8×20 Bolt	12	GB/T5783-2000
4	359400159	操纵手柄 Operation handle	4	
5	805200046	螺母 M5 Nut	8	GB/T6170-2000
6	359400100	拨叉 Fork	4	
7	805100082	螺钉 M5×12 Screw	4	GB/T70.1-2008
8	359400133	销轴 Pin shaft	4	
9	352100304	隔套 Spacer bush	1	
10	352100325	连接轴 Joint shaft	1	
11	805300030	垫圈 6 Cushion ring	4	GB/T93-1987
12	805000322	螺栓 M6×16 Bolt	1	GB/T5783-2000
13	352100317	连杆 Linker	4	
14	805300010	轴用弹性挡圈 8 Check ring	8	GB/T93-1987
15	359400133	销轴 Pin shaft	4	
16	359400118	拨叉 Fork	4	
17	352100305	隔套 Spacer bush	1	
18	805100081	螺钉 M6×65 Screw	4	GB/T70.1-2008
19	352100308	阀架 I Check value retainer I	1	
20	805200053	螺母 M6 Nut	3	GB/T6170-2000
21	359400160	TB 10 085 手柄 Handle	1	
22	359400161	TB 10 086 手柄 Handle	1	
23	359400162	TB 10 087 手柄 Handle	1	
24	359400164	TB 10 089 手柄 Handle	1	



352100696 左支腿油缸 Left leg cylinder



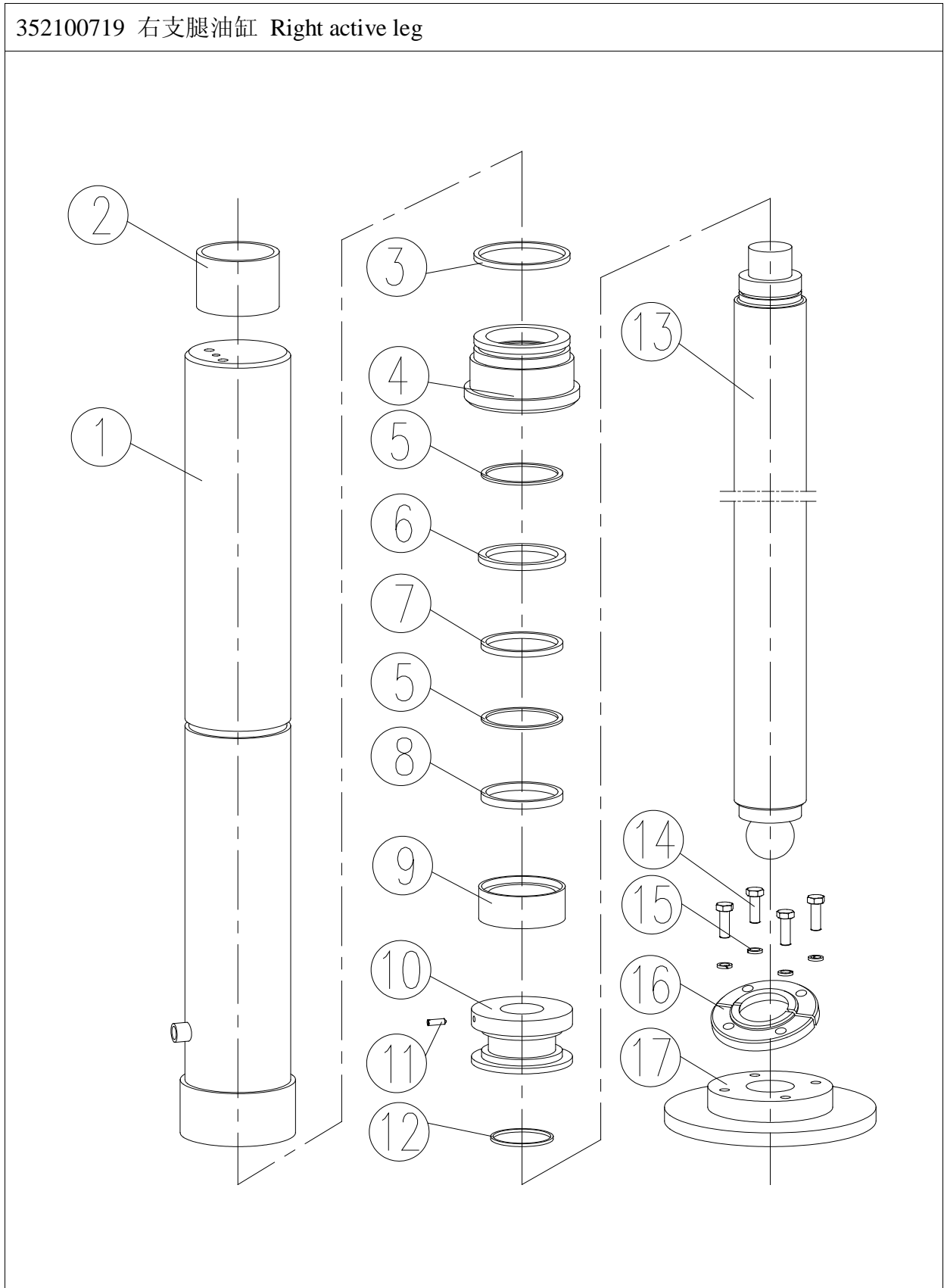


352100696 左支腿油缸 Left leg cylinder

序号 No.	物料代码 Part number	名称 Part Name	推荐数量 Advised Q'ty	备注 Remark
1	—	隔套 Spacer bush	1	
2	—	缸体 Cylinder	1	
3	803174878	O 型圈 110×5.7 O-ring	1	GB/T1235-1976
4	—	缸盖 Cylinder cover	1	
5	—	轴用支承环 Support ring	2	d80×14.7×3
6	—	组合封 Assembled seal	1	d80×95.1×6.3
7	—	轴用密封圈 Seal for shaft	1	d80×90×8
8	—	防尘圈 Dustproof ring	1	d80×90×6/8
9	—	组合封 Assembled seal	1	D100×75×22.4
10	—	活塞 Piston	1	
11	—	紧定螺 M10×15 Tightness screw	1	GB/T79-1985
12	801100074	O 型圈 60×3.1 O-ring	1	GB/T1235-1976
13	—	活塞杆 Piston	1	
14	—	六角螺钉 M10×30 Screw	4	GB/T5781-1985
15	—	弹簧垫圈 10 Cushion ring	4	GB/T93-1987
16	—	盖板 Cover board	2	
17	—	支脚 Foot	1	



352100719 右支腿油缸 Right active leg



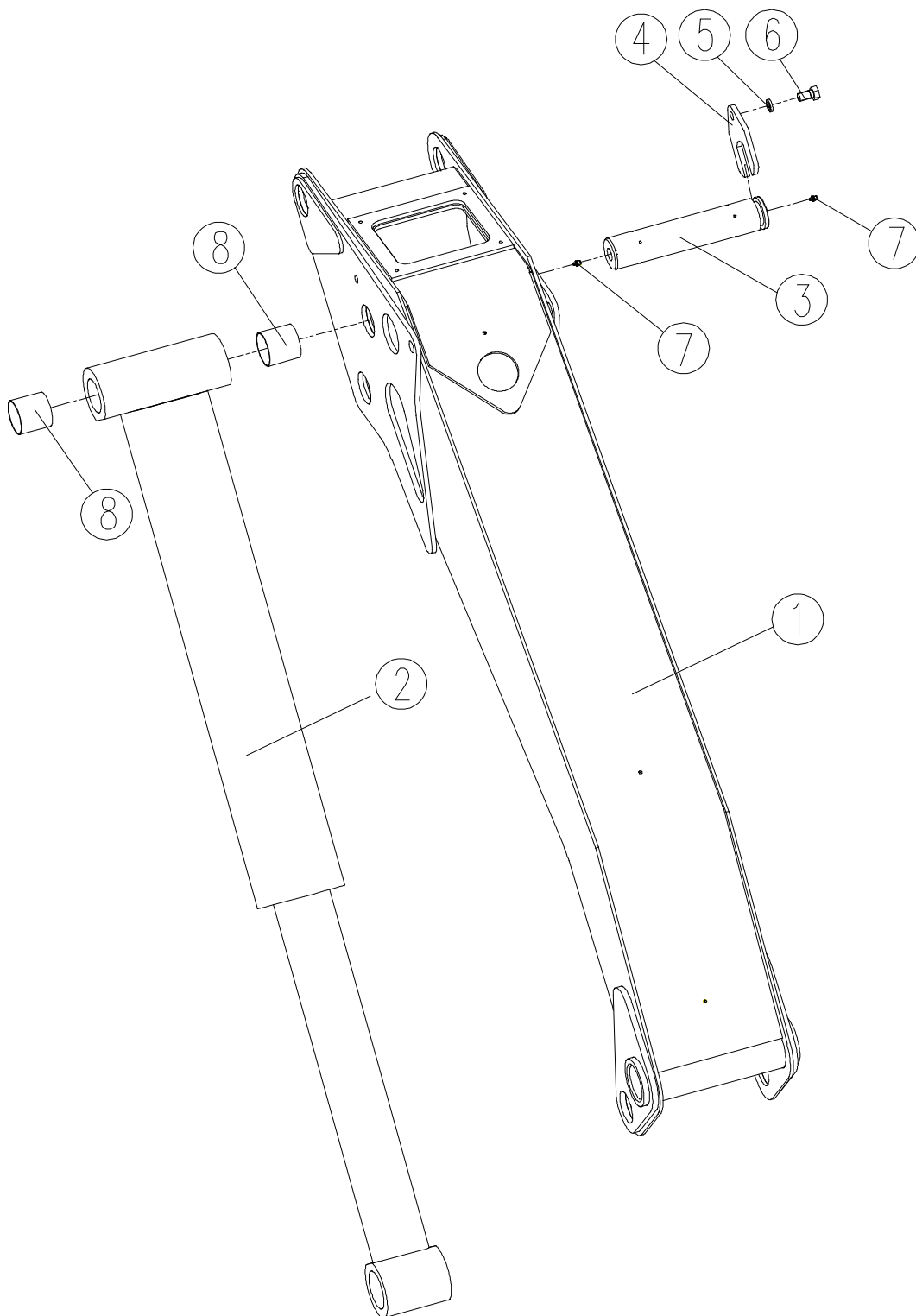


352100719 右支腿油缸 Right active leg

序号 No.	物料代码 Part number	名称 Part Name	推荐数量 Advised Qty	备注 Remark
1	—	隔套	1	
2	—	缸体 Cylinder	1	
3	803192678	O 型圈 110×5.7 O-ring	1	GB/T1235-1976
4	—	缸盖 Cylinder cover	1	
5	—	轴用支承环 Support ring	2	D100×9.4×2.5
6	—	斯特封 Seal	1 组	d80×95.1×6.3
7	—	轴封 Seal for shaft	1	d80×90×8
8	—	防尘圈 Dustproof ring	1	d80×90×6/8
9	—	组合密封 Assembled seal	1	D100×75×22.4
10	—	活塞 Piston	1	
11	—	紧定螺钉 M10×15 Tightness screw	1	GB/T79-1985
12	803002656	O 型圈 60×3.1 O-ring	1	GB/T1235-1976
13	—	活塞杆 Piston	1	
14	—	六角螺钉 M10×30 Screw	4	GB/T5781-1985
15	—	弹簧垫圈 10 Cushion ring	4	GB/T93-1987
16	—	盖板	2	
17	—	支脚 Foot	1	

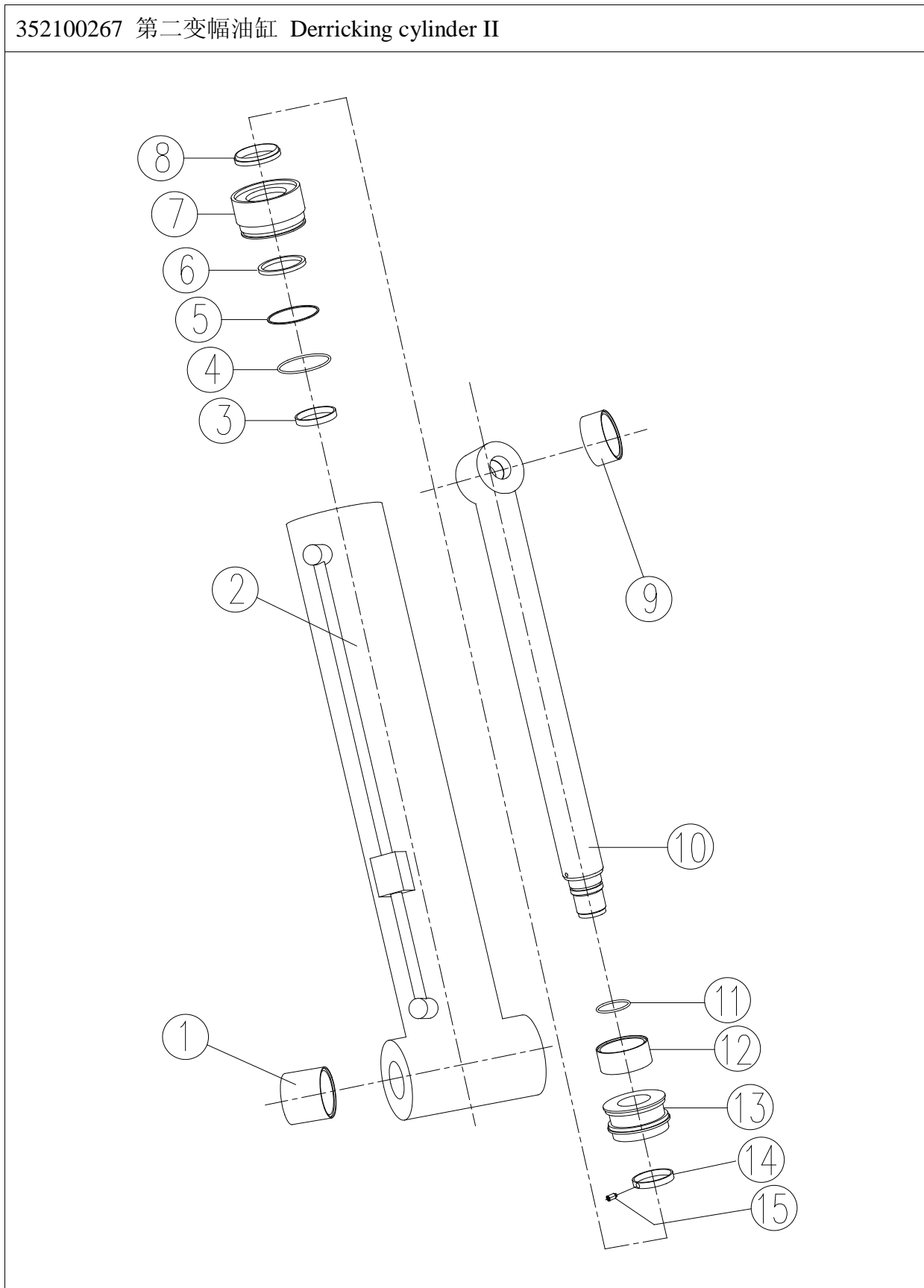


352100268 内臂总成 Inner boom



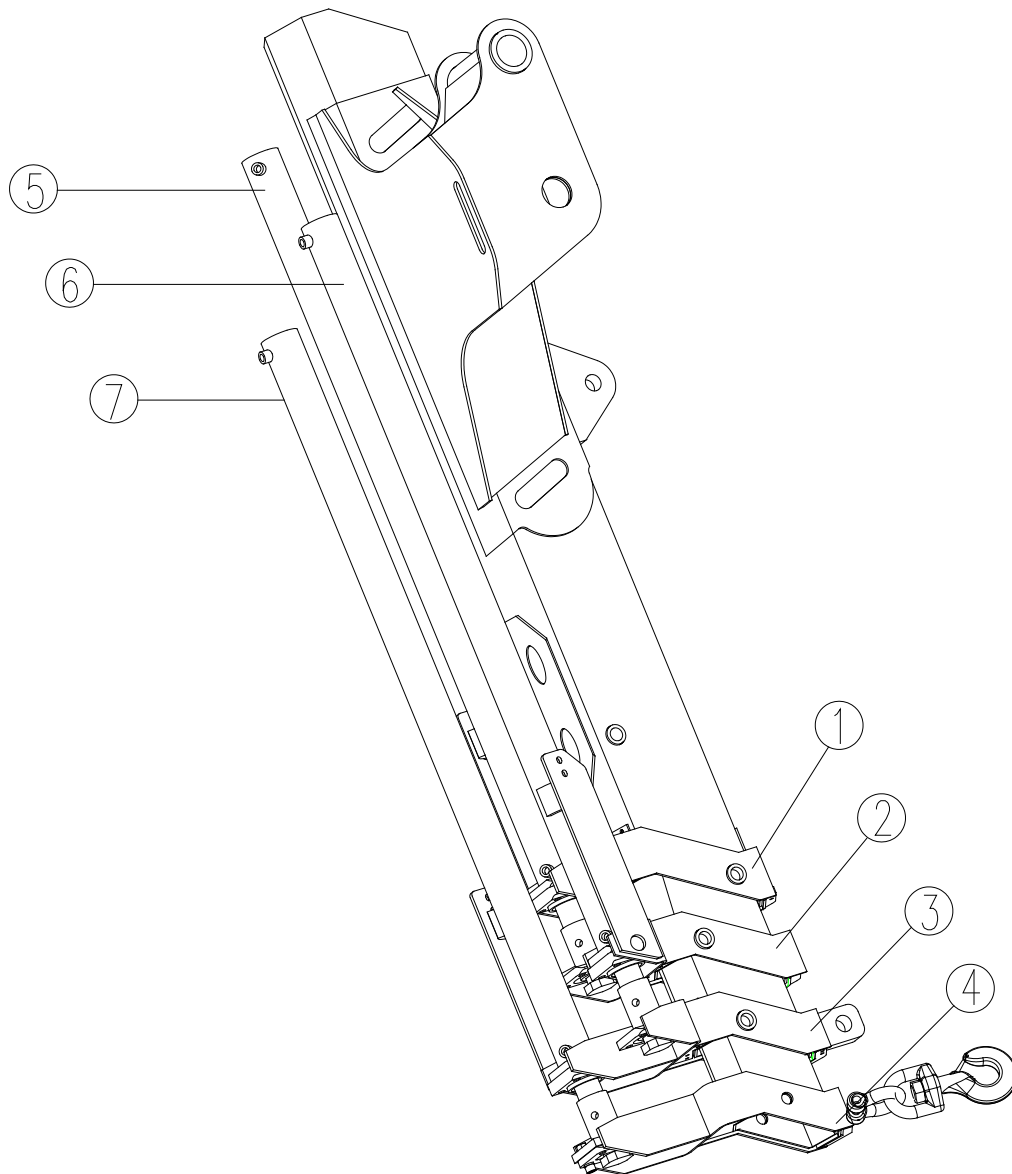


352100267 第二变幅油缸 Derricking cylinder II



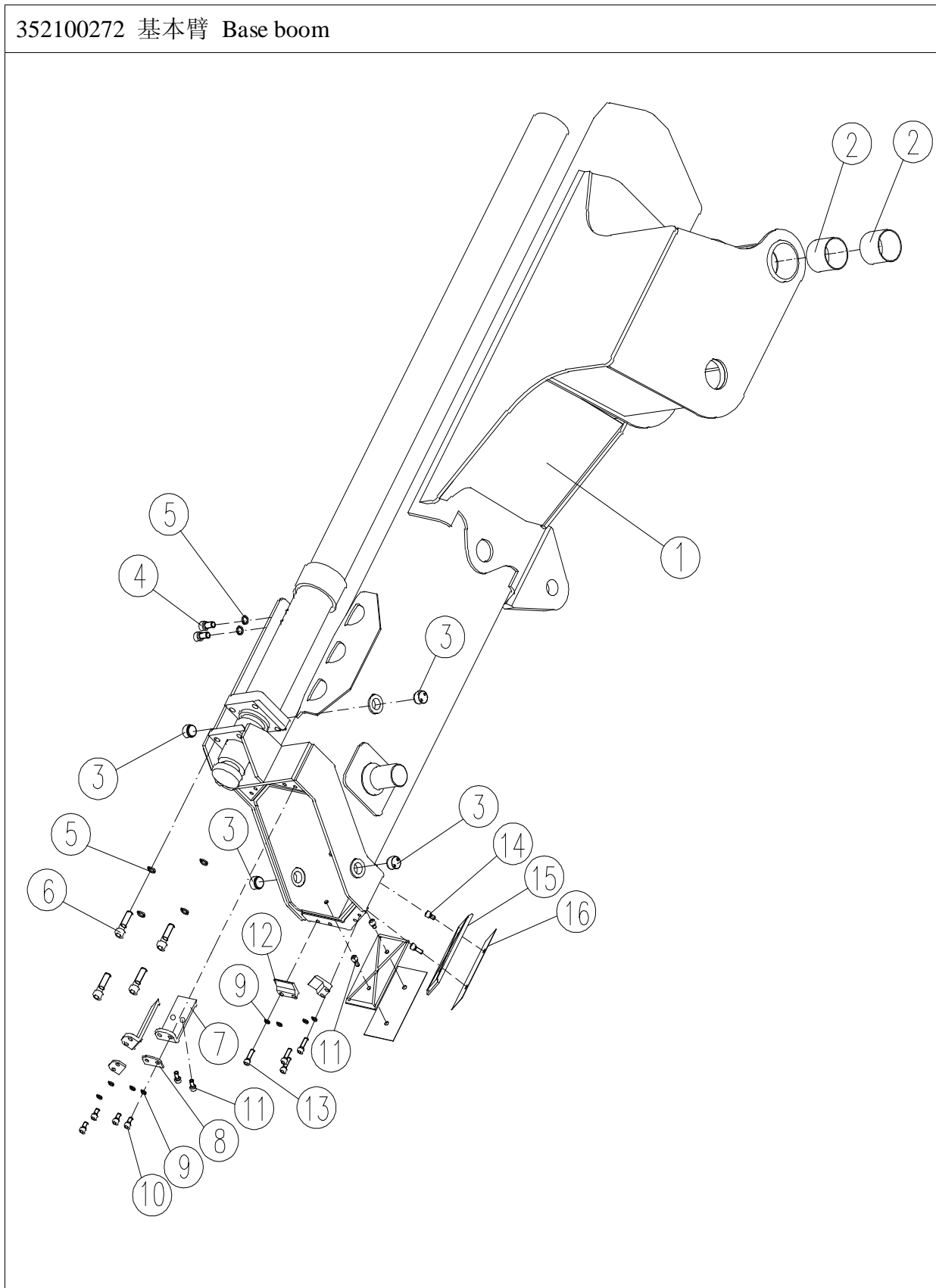


352100268 外臂总成 Outer boom





352100272 基本臂 Base boom



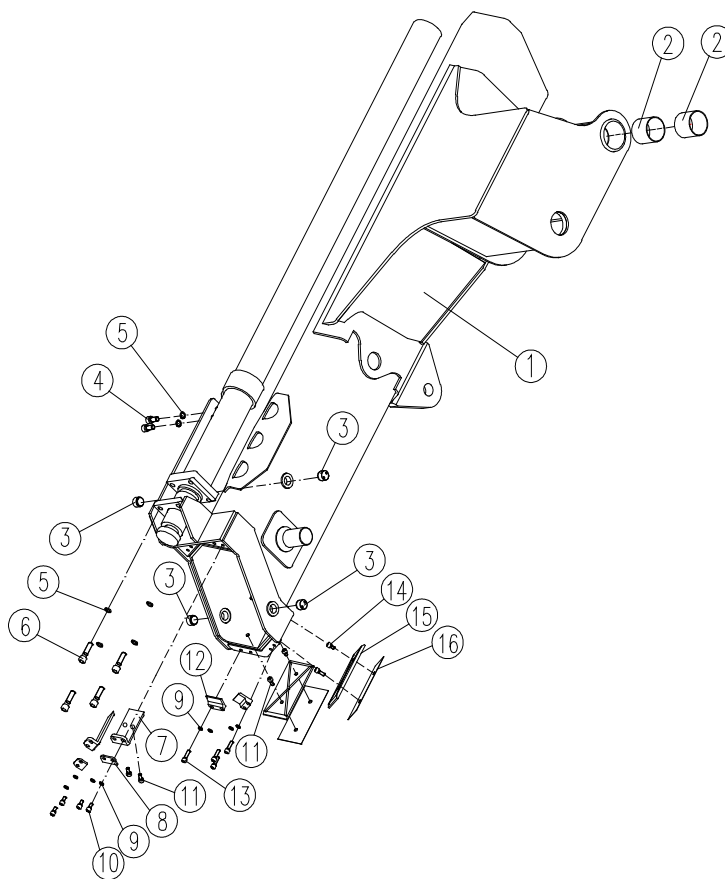


352100272 基本臂 Base boom

序号 No.	物料代码 Part number	名称 Part Name	推荐数量 Advised Q' ty	备注 Remark
1	352100272	外臂结构 Base boom	1	
2	800513873	衬套 Bushing	2	Ø85×Ø80×80
3	359400167	支承块 Support boom	4	
4	805100188	螺钉 M16×40 Screw	2	GB/T70.1-2008
5	805300011	垫圈 16 Cushion ring	6	GB/T93-1987
6	805100451	螺钉 M16×60 Screw	4	GB/T70.1-2008
7	352100209	滑块 Slide pad	2	
8	352100104	前挡板 I Head board I	2	
9	805300014	垫圈 10 Cushion ring	8	GB/T93-1987
10	805100173	螺钉 M10×20 Screw	4	GB/T70.1-2008
11	805100036	螺钉 M10×25 Screw	6	GB/T70.1-2008
12	—	前挡板 Head board	2	
13	805100100	螺钉 M10×35 Screw	4	GB/T70.1-2008
14	805100151	螺钉 M10×16 Screw	2	GB/T70.1-2008
15	352100211	滑块 Slide pad	2	
16	352100271	调整垫片 Adjustable cushion	2	



352100273 一节伸缩臂 Boom extension 1



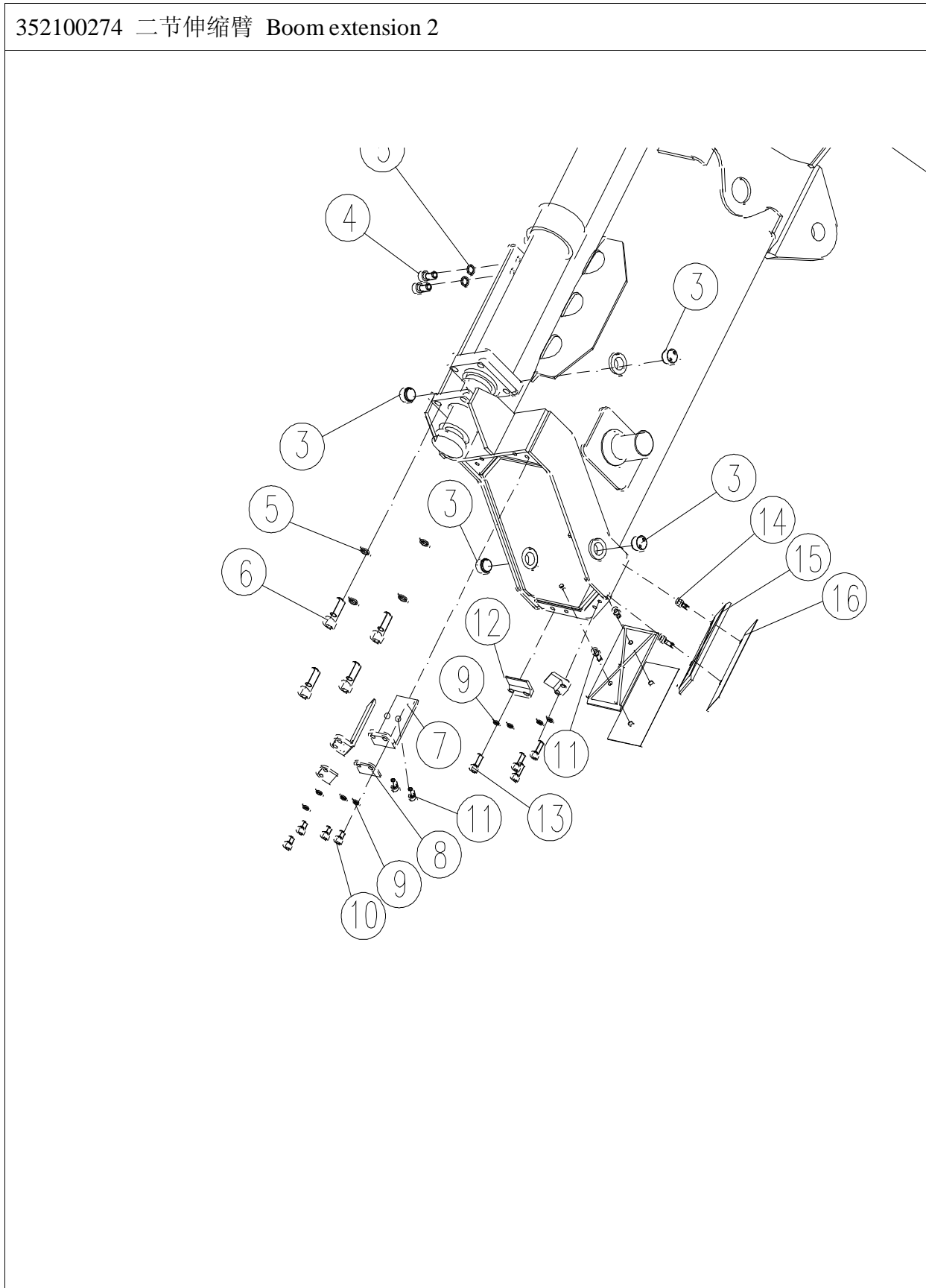


352100273 一节伸缩臂 Boom extension 1

序号 No.	物料代码 Part number	名称 Part Name	推荐数量 Advised Q' ty	备注 Remark
1	352100273	一节伸缩臂 Telescopic boom I	1	
2	805100451	螺钉 M16×60 Screw	8	GB/T70.1-2008
3	805300011	垫圈 16 Cushion ring	10	GB/T93-1987
4	352100101	法兰卡板 II Clip board II	1	
5	805200051	螺母 M16 Nut	4	GB/T6170-2000
6	352100209	滑块 Slide pad	2	
7	352100104	前挡板 I Head board I	2	
8	805300014	垫圈 10 Cushion ring	12	GB/T93-1987
9	805100173	螺钉 M10×20 Screw	8	GB/T70.1-2008
10	805100036	螺钉 M10×25 Screw	8	GB/T70.1-2008
11	—	前挡板 Head board	2	
12	805100100	螺钉 M10×35 Screw	4	GB/T70.1-2008
13	352100210	滑块 ss Slide pad	2	
14	352100270	调整垫片 Adjustable cushion	2	
15	359400167	支承块 Support boom	2	
16	805100188	螺钉 M16×40 Screw	2	GB/T70.1-2008
17	352100102	后挡板 I Backboard	2	
18	352100206	滑块 Slide pad	2	
19	805100512	螺钉 M10×16 Screw	2	GB/T70.3-2000



352100274 二节伸缩臂 Boom extension 2



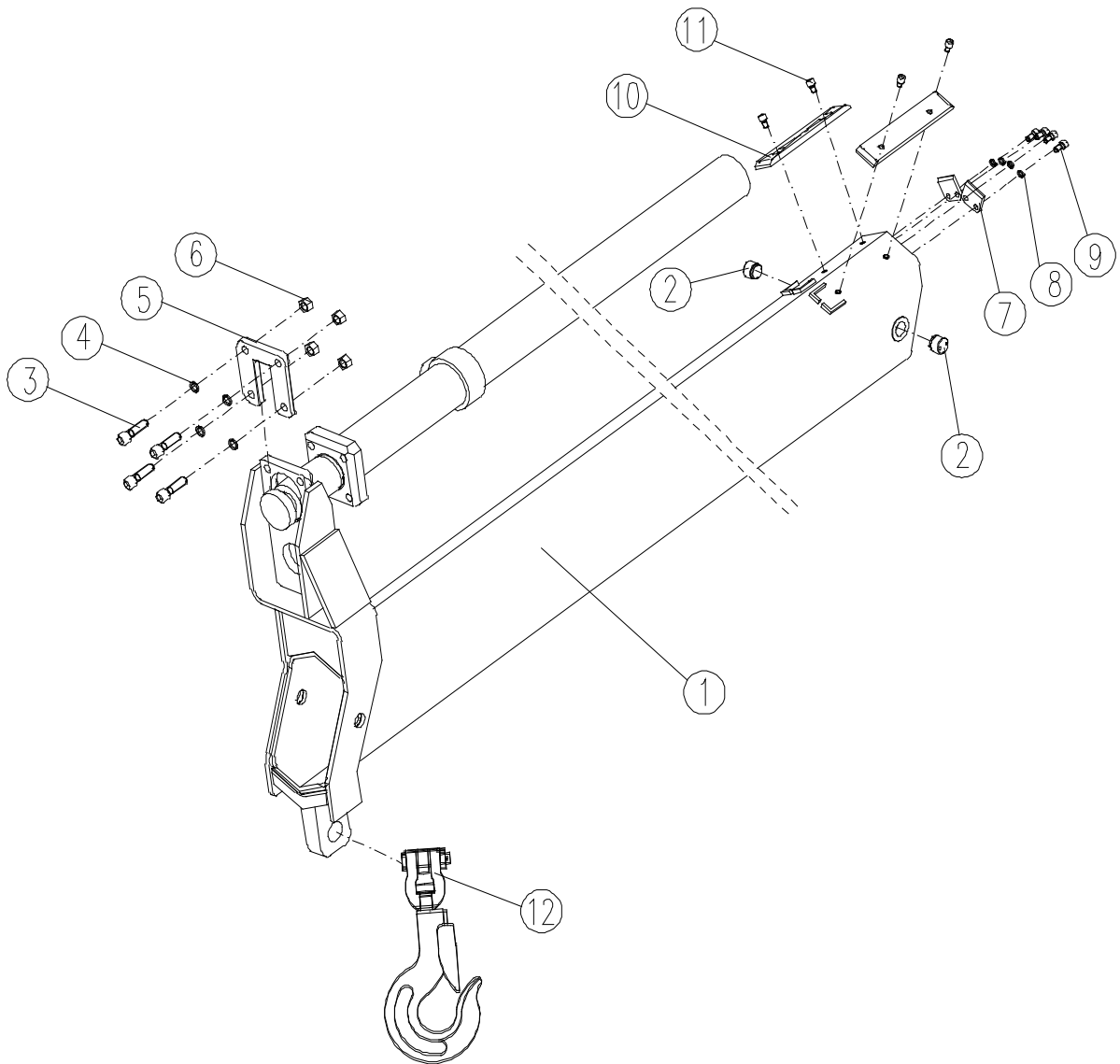


352100274 二节伸缩臂 Boom extension 2

序号 No.	物料代码 Part number	名称 Part Name	推荐数量 Advised Q' ty	备注 Remark
1	352100274	二节伸缩臂 Two boom extension	1	
2	805100188	螺钉 M16×40 Screw	2	GB/T70.1-2008
3	805300011	垫圈 16 Cushion ring	10	GB/T93-1987
4	359400167	支承块 Support boom	4	
5	805200051	螺母 M16 Nut	4	GB/T6170-2000
6	352100101	法兰卡板 I Clip board I	1	
7	805100451	螺钉 M16×60 Screw	8	GB/T70.1-2008
8	352100209	滑块 Slide pad	2	
9	352100104	前挡板 I Head board I	2	
10	805300014	垫圈 10 Cushion ring	12	GB/T93-1987
11	805100173	螺钉 M10×20 Screw	8	GB/T70.1-2008
12	805100036	螺钉 M10×25 Screw	8	GB/T70.1-2008
13	—	前挡板 Head board	2	
14	352100212	滑块 Slide pad	2	
15	352100269	调整垫片 Adjustable cushion	2	
16	352100102	后挡板 I Head board I	2	
17	805100512	螺钉 M10×16 Screw	4	GB/T70.3-2000
18	352100207	滑块 Slide pad	2	

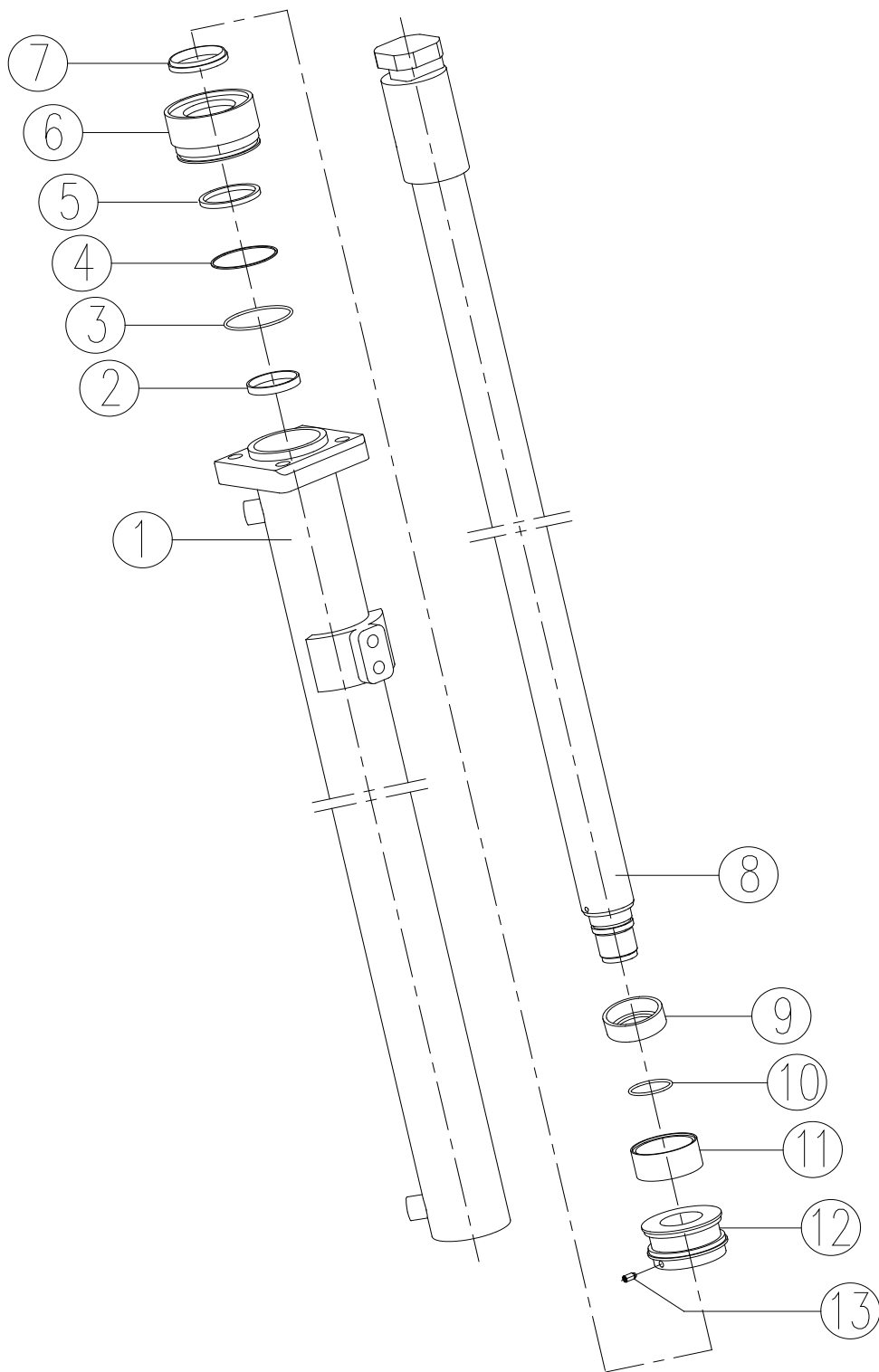


352100275 三节伸缩臂 Boom extension 3



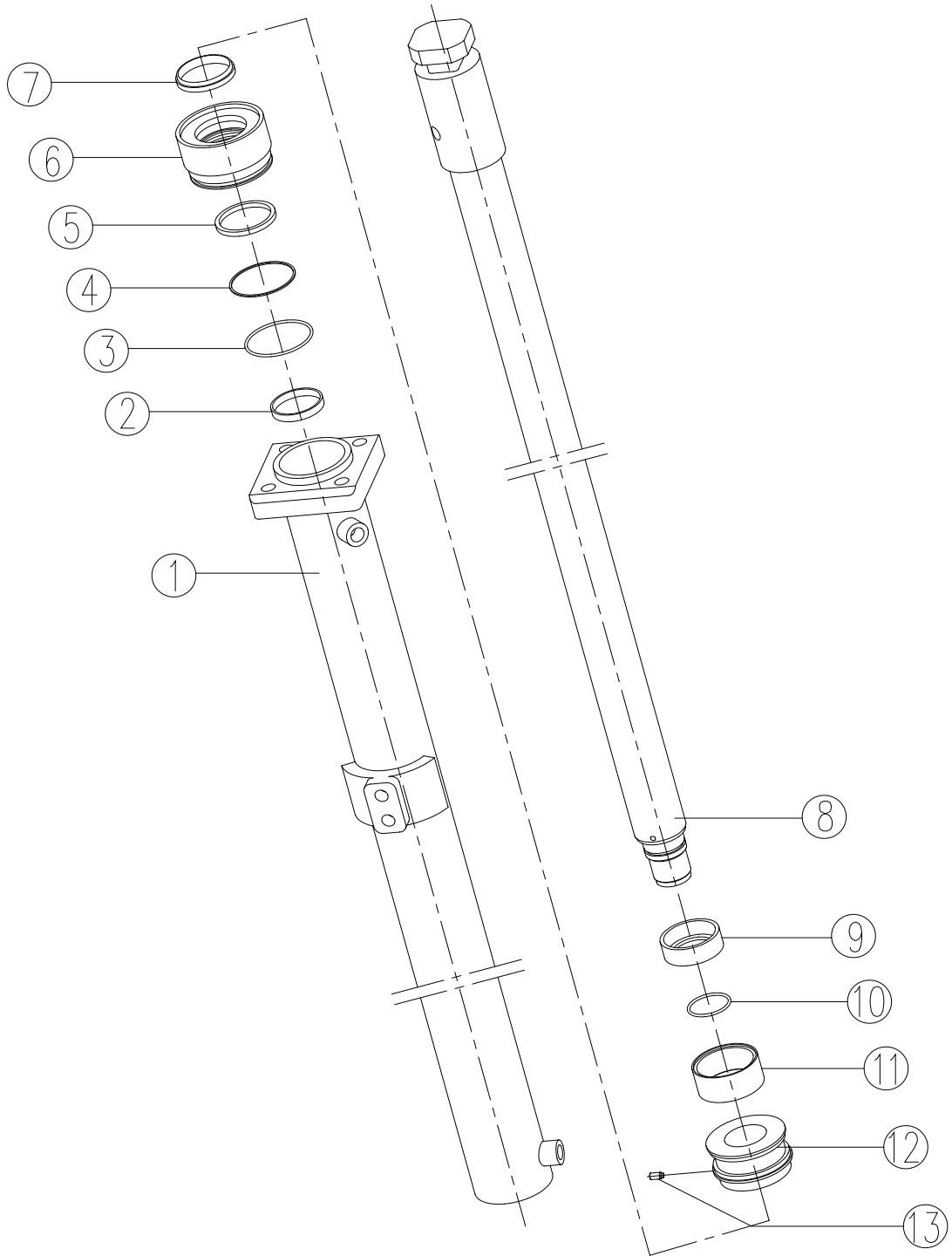


352100218 第一伸缩油缸 Telescopic cylinder I



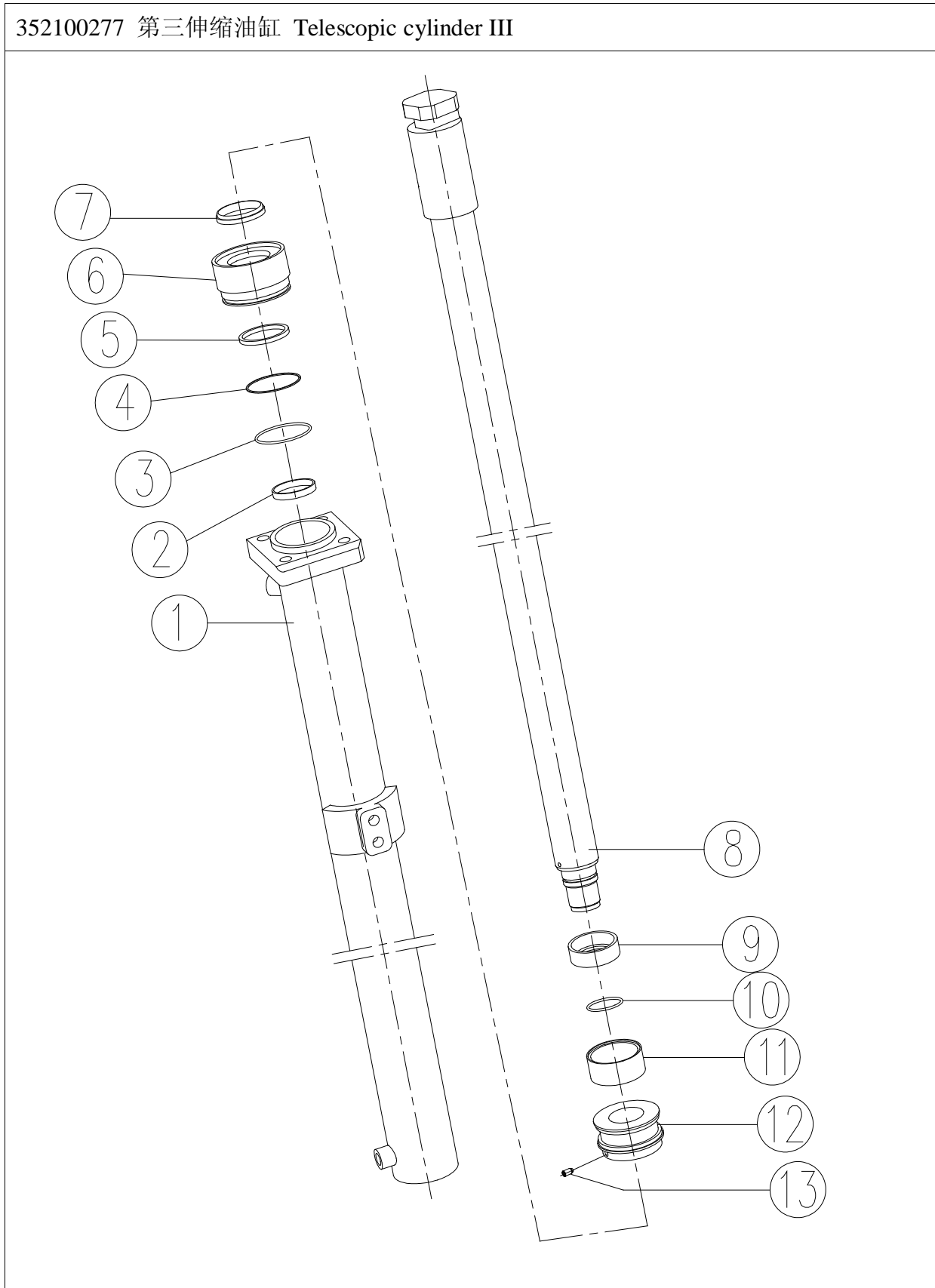


352100276 第二伸缩油缸 Telescopic cylinder II



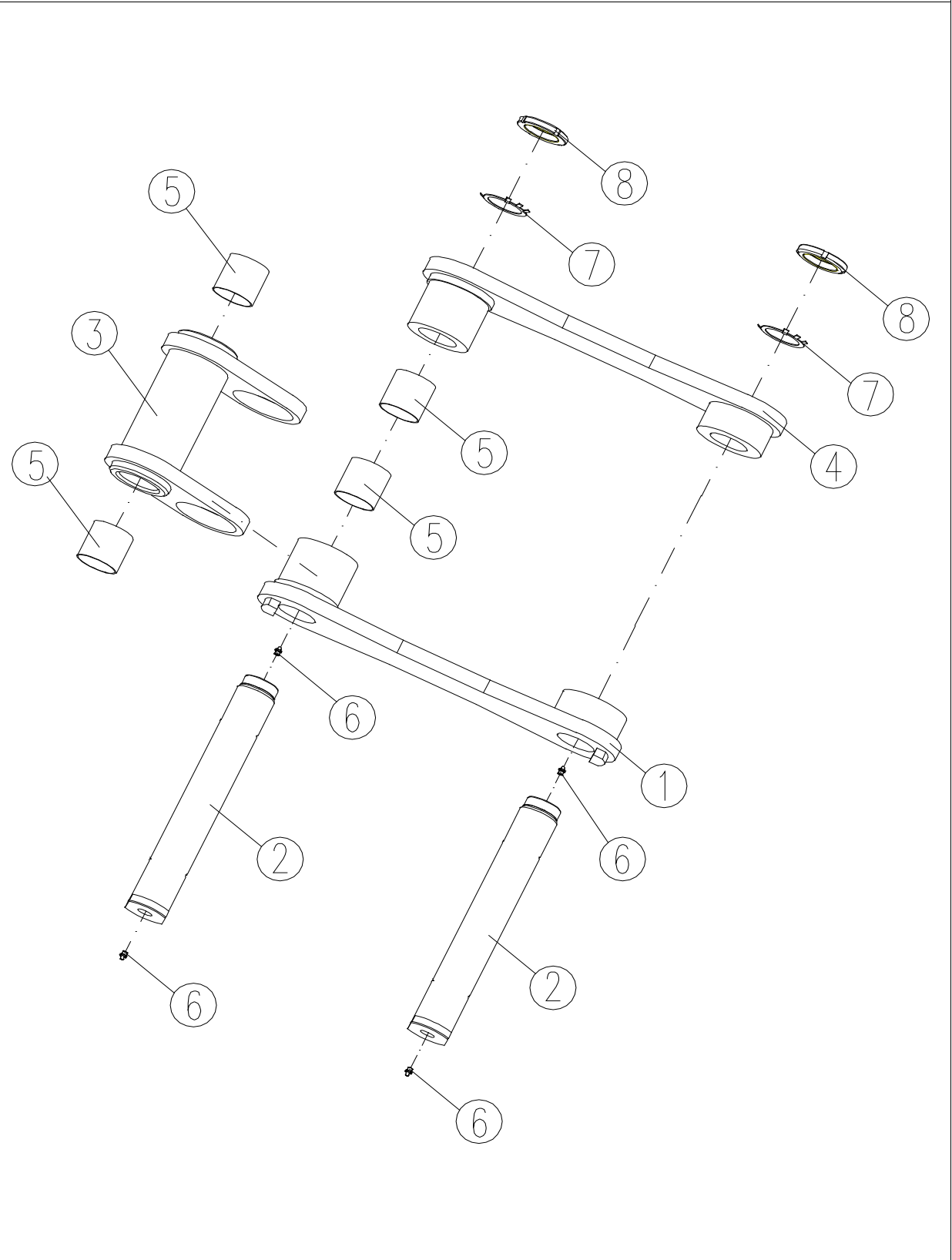


352100277 第三伸缩油缸 Telescopic cylinder III



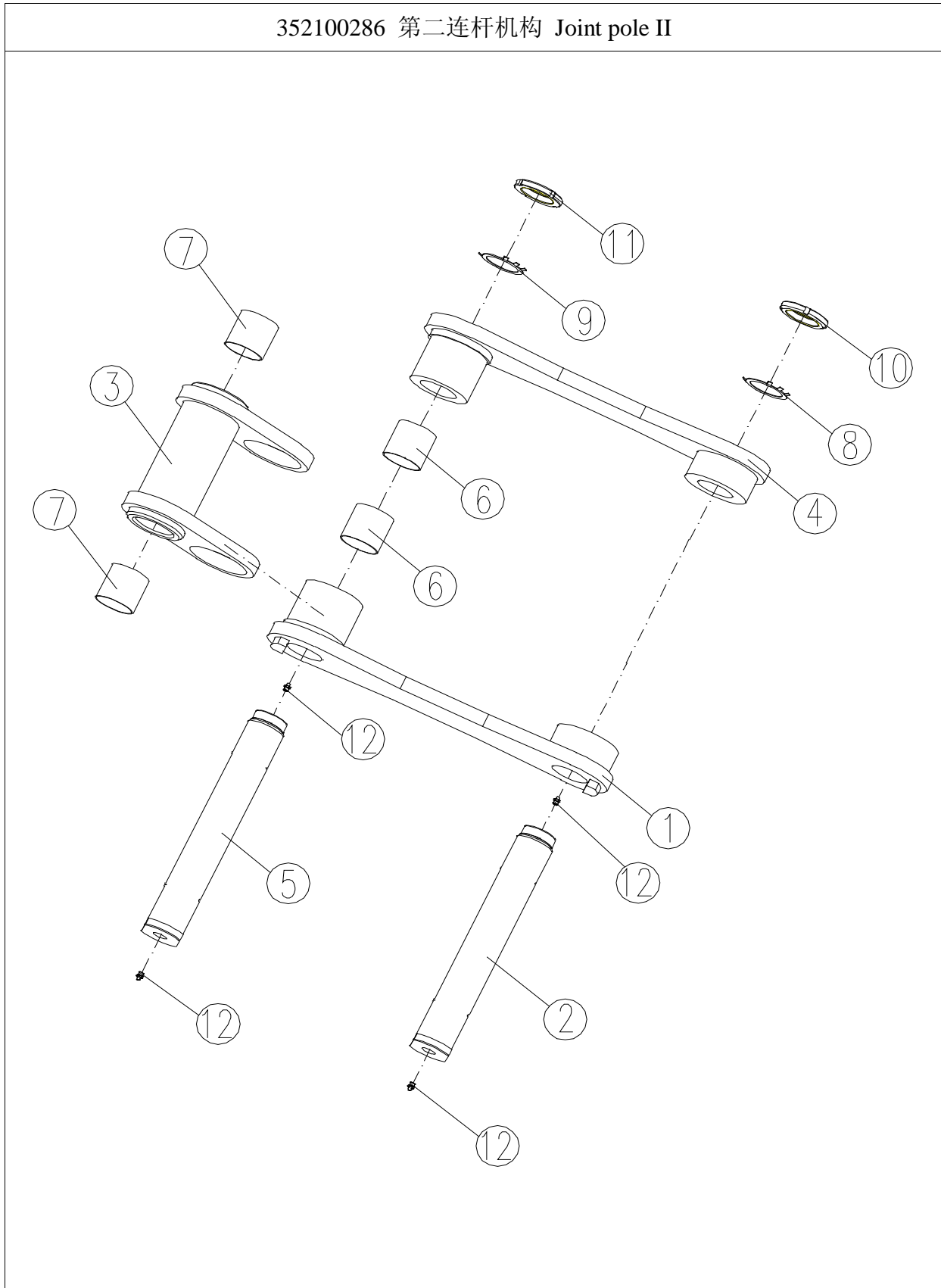


352100284 第一连杆机构 Joint pole I



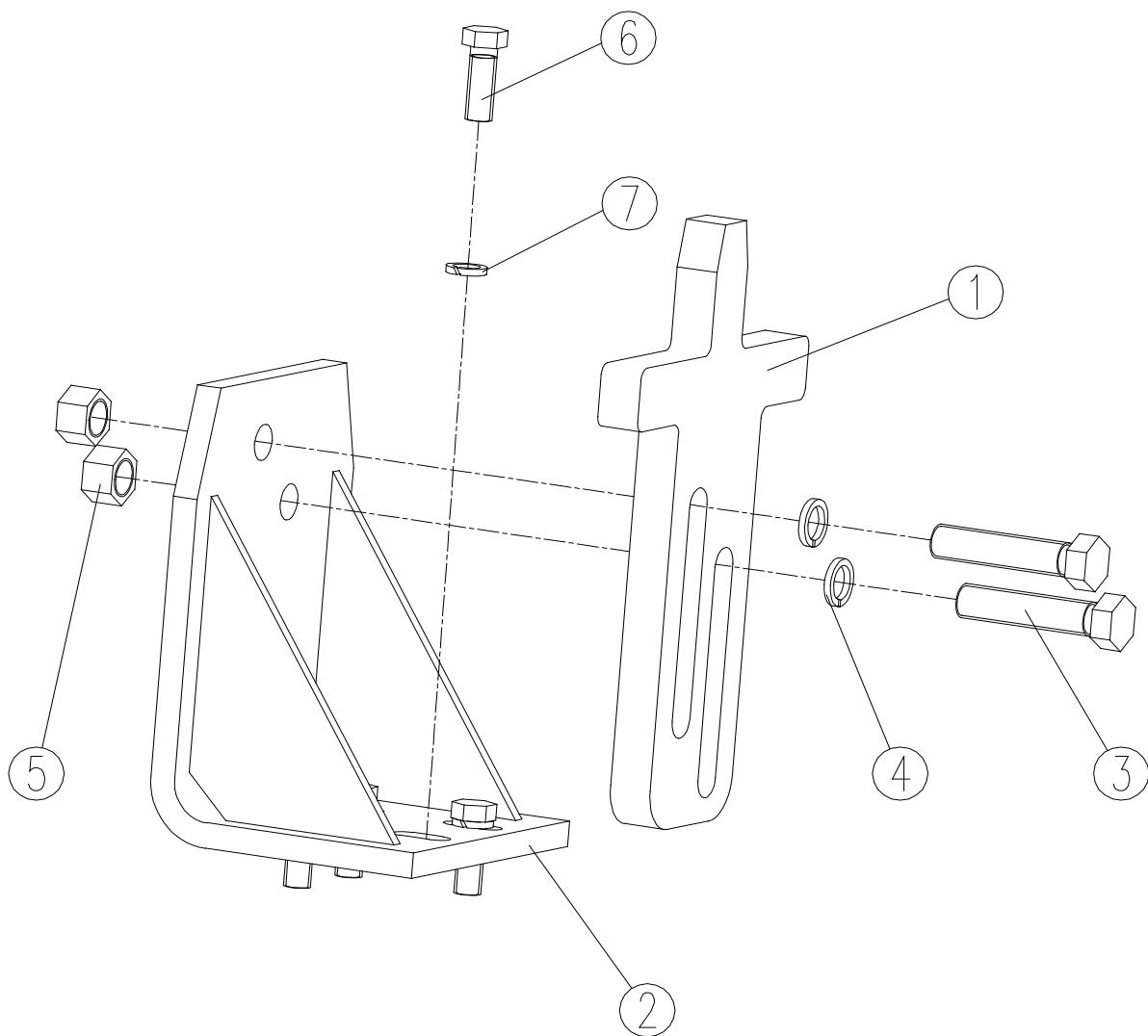


352100286 第二连杆机构 Joint pole II



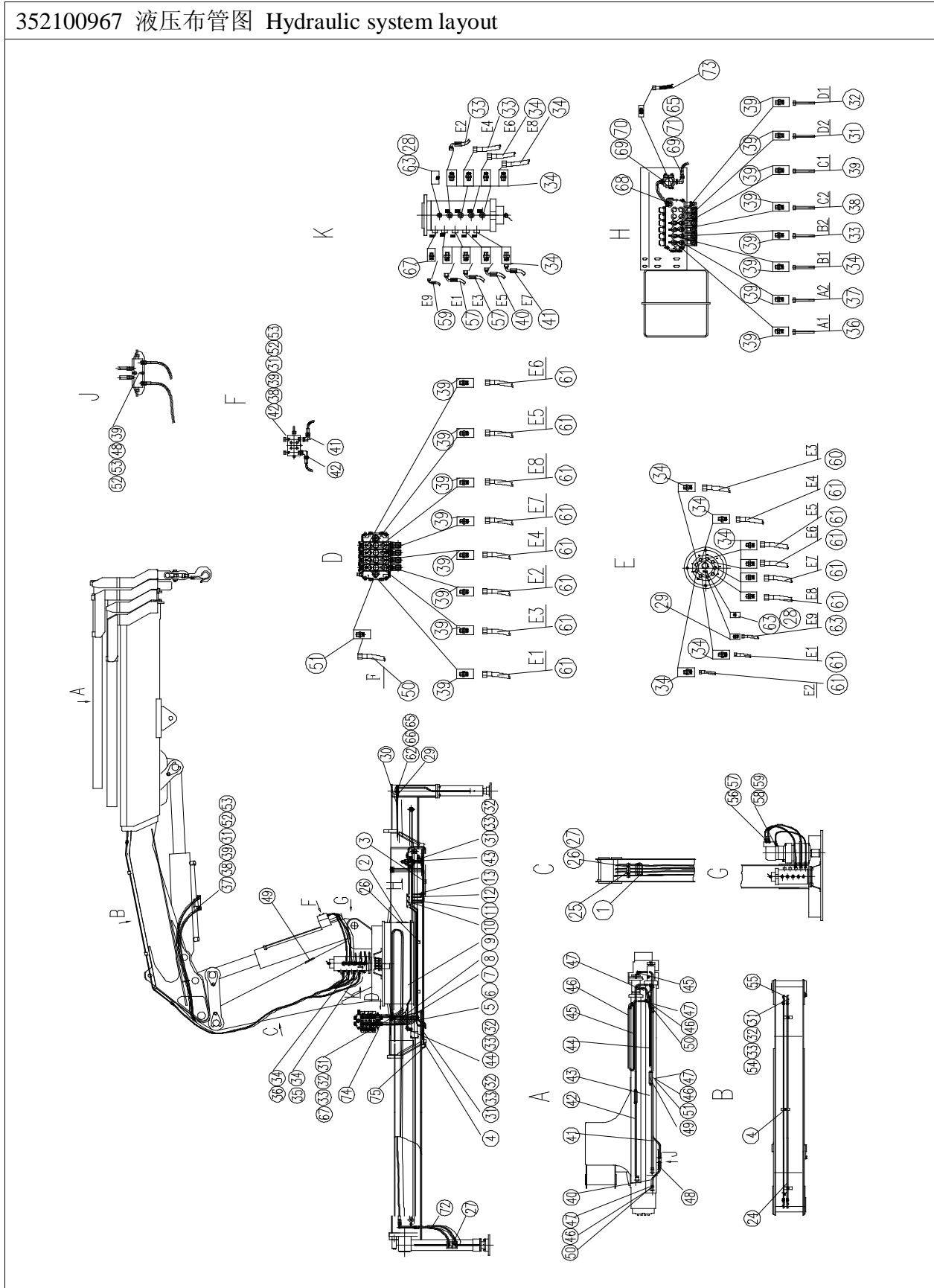


352100288 防回转下落机构 Anti-slewing mechanism





352100967 液压布管图 Hydraulic system layout



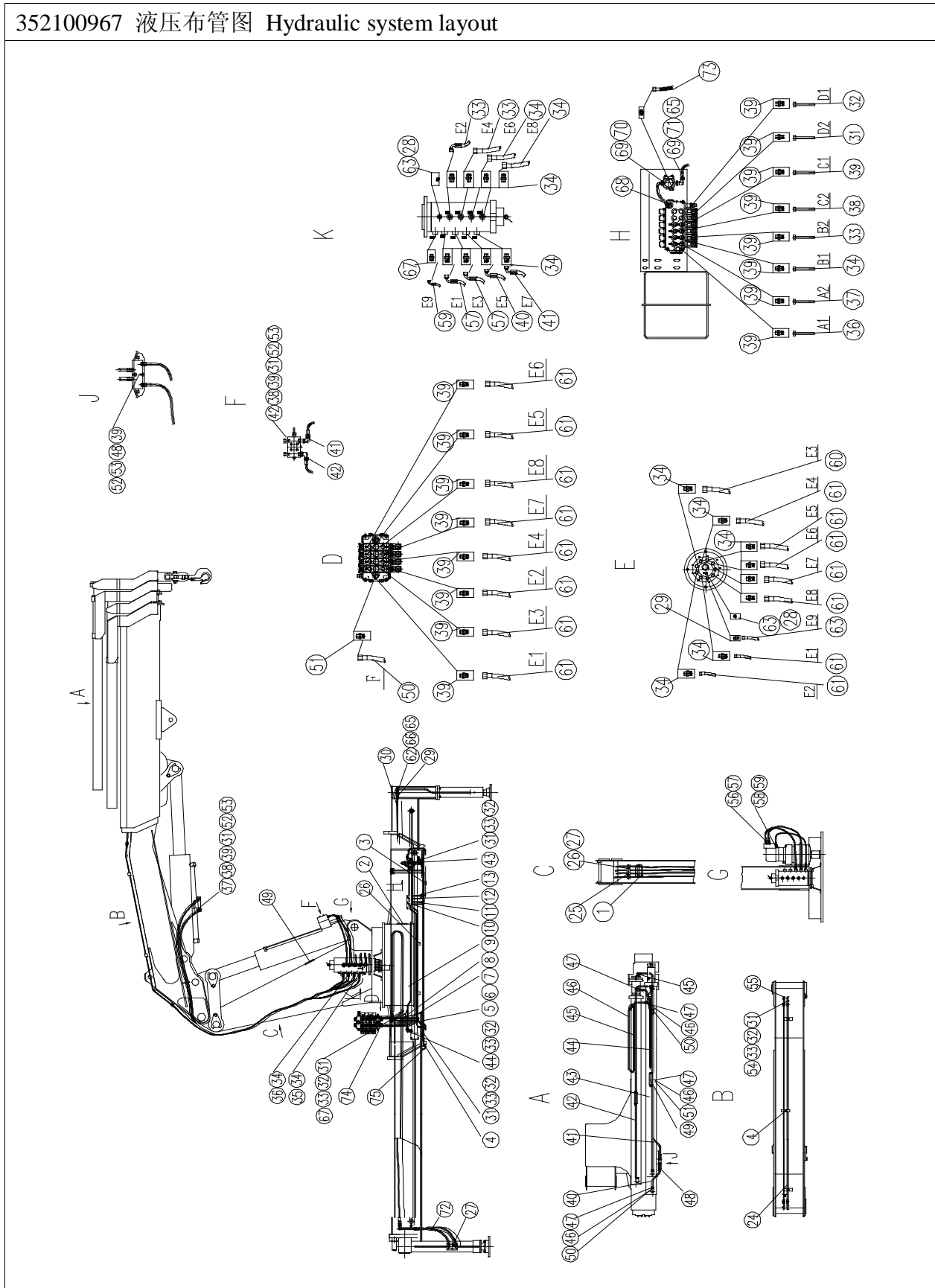


352100967 液压布管图 Hydraulic system layout

序号 No.	物料代码 Part number	名称 Part Name	推荐数量 Advised Q' ty	备注 Remark
1	359400086	护套 Shield sleeve	1	
2	359400098	护套 Shield sleeve	2	
3	359400105	管夹 Hose clip	2	
4	359400104	管夹 Hose clip	8	
5	352100222	弯管 Bend tube	1	
6	352100223	弯管 Bend tube	1	
7	352100224	弯管 s Bend tube	1	
8	352100225	弯管 Bend tube	1	
9	352100226	弯管 Bend tube	2	
10	352100227	弯管 Bend tube	1	
11	352100228	弯管 Bend tube	1	
12	352100229	弯管 Bend tube	1	
13	352100230	弯管 Bend tube	1	
14	352000199	弯管 Bend tube	1	
15	352000200	弯管 Bend tube	1	
16	352000201	弯管 Bend tube	1	
17	352000202	弯管 Bend tube	1	
18	352000203	弯管 Bend tube	1	
19	352000204	弯管 Bend tube	1	
20	352000205	弯管 Bend tube	1	
21	352000206	弯管 Bend tube	1	
22	352000279	阀板 Value plate	1	
23	359400090	护套 Shield sleeve	3	
24	352000207	弯管 Bend tube	2	
25	359400109	管夹 Hose clip	1	



352100967 液压布管图 Hydraulic system layout



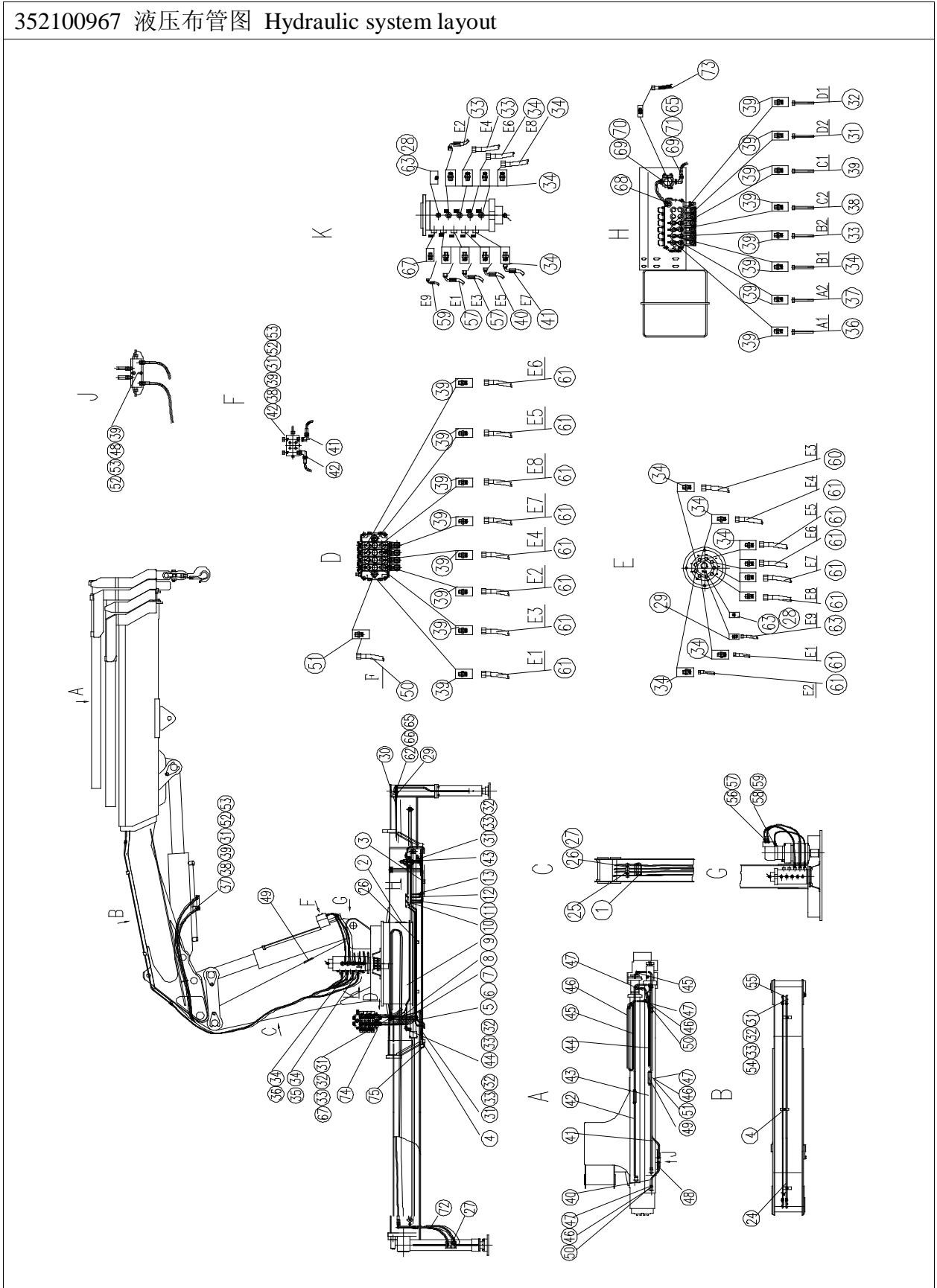


352100967 液压布管图 Hydraulic system layout

序号 No.	物料代码 Part number	名称 Part Name	推荐数量 Advised Q' ty	备注 Remark
26	359400198	管夹 Hose clip	1	
27	803008012	双向液压锁 Hydraulic lock	2	2SOY-2288
28	805300024	组合垫圈 14 Hose clip	2	
29	803168085	管夹 Hose clip	8	
30	803175576	直角接头 Straight joint	1	I10LM14×1.5ED
31	803174525	接头 Joint	1	LH12L
32	803174689	卡套 Cutting sleeve	1	P-R12L
33	803174540	卡套 Cutting sleeve	1	M12L
34	803174466	接头 Joint	2	I12LM22×1.5ED
35	803175577	软管 Hose	1	
36	803175578	软管 Hose	1	
37	803007927	双向平衡阀 Dual-balance valve	1	SSPHB50
38	803175879	螺塞 Plug screw	1	VS-R3/8-WD
39	803174462	接头 Joint	1	I12LG3/8ED
40	803165095	软管 Hose	1	
41	803166104	胶管 Rubber tube	1	
42	803008266	单向平衡阀 Balance valve	1	08.45.20-03-02-35
43	803008023	六联多路阀 Multichannel valve	1	D(6)-6G-OYYOY
44	803174585	接头 Joint	1	WH12LROMDA3
45	803174526	接头 Joint	1	LH15L
46	803174715	卡套 Cutting sleeve	1	PSR15L
47	803174541	螺母 Nut	1	M15L
48	803007925	双向平衡阀 Dual-balance valve	1	SSPHG50
49	803008157	顺序阀 Hydraulic lock	2	052116000305



352100967 液压布管图 Hydraulic system layout



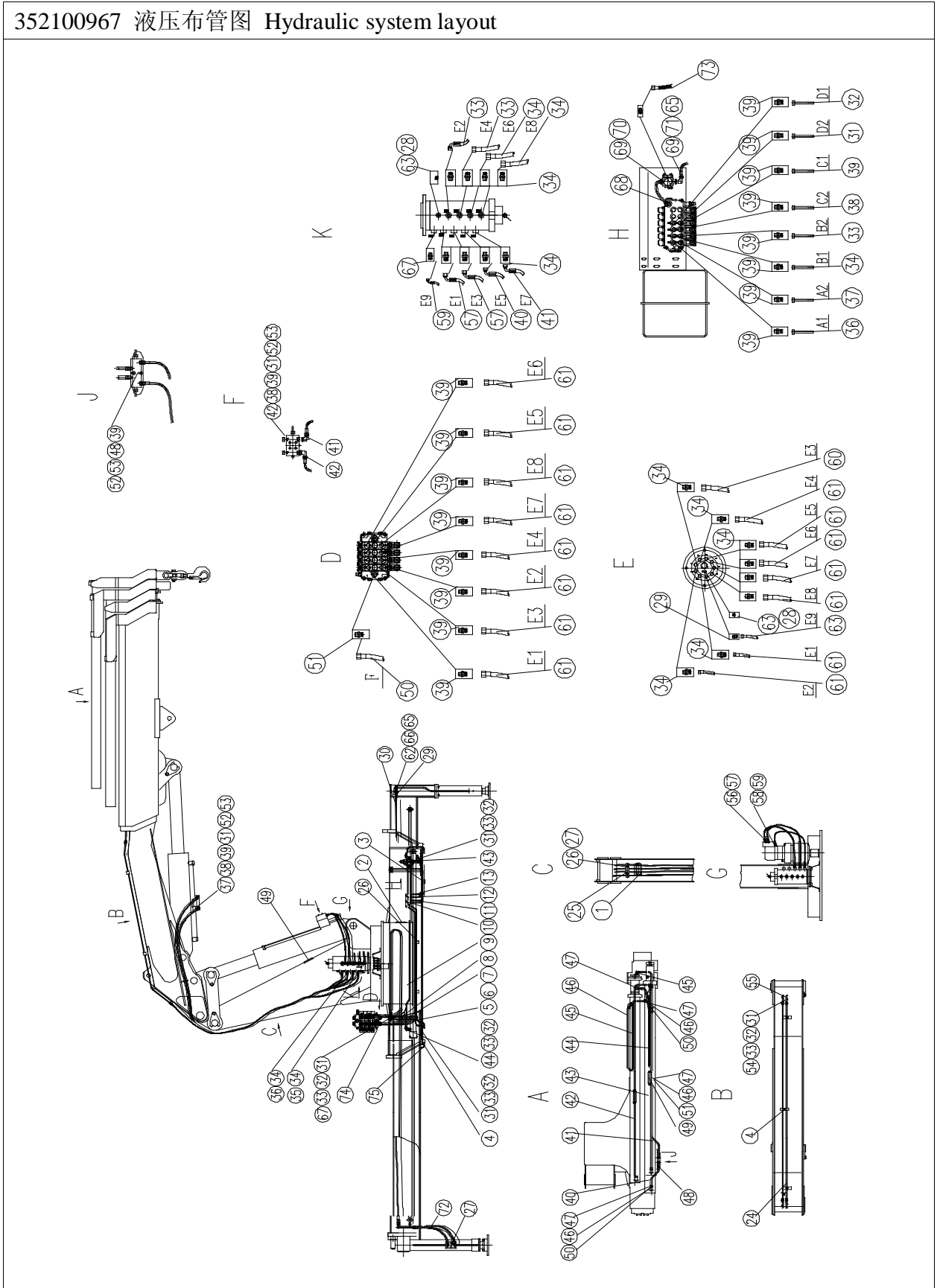


352100967 液压布管图 Hydraulic system layout

序号 No.	物料代码 Part number	名称 Part Name	推荐数量 Advised Q' ty	备注 Remark
50	803174474	接头 Joint	8	I15LM18×1.5ED
51	803174471	接头 Joint	4	I15LG1/2ED
52	805000237	螺栓 M8×45 Bolt	10	GB/T5783-2000
53	805300010	垫圈 8 Cushion ring	10	GB/T93-1987
54	803175607	软管 Hose	1	
55	803166105	胶管 Rubber tube	1	
56	803174645	接头 Joint	2	I12LG3/4ED
57	803175425	软管 Hose	1	
58	803174461	接头 Joint	1	I12LG1/4ED
59	803175425	软管 Hose	1	
60	803175500	软管 Hose	1	
61	803175580	软管 Hose	8	
62	803008012	双向液压锁 Hydraulic lock	1	SO-K8L-J7
63	803174312	螺塞 M14×1.5 Plug screw	2	JB/ZQ4444-1997
64	803175322	软管 Hose	1	
65	805005193	螺栓 M10×45 Bolt	2	GB/T5783-2000
66	805300014	垫圈 10 Cushion ring	2	GB/T93-1987
67	803174463	接头 Joint	5	I12LM14×1.5ED
68	803174473	接头 Joint	1	I15LG3/8ED
69	803174475	接头 Joint	2	I15LM22×1.5ED
70	803175581	软管 Hose	1	
71	803175579	软管 Hose	1	
72	803175530	软管 Hose	2	
73	803175582	软管 Hose	1	

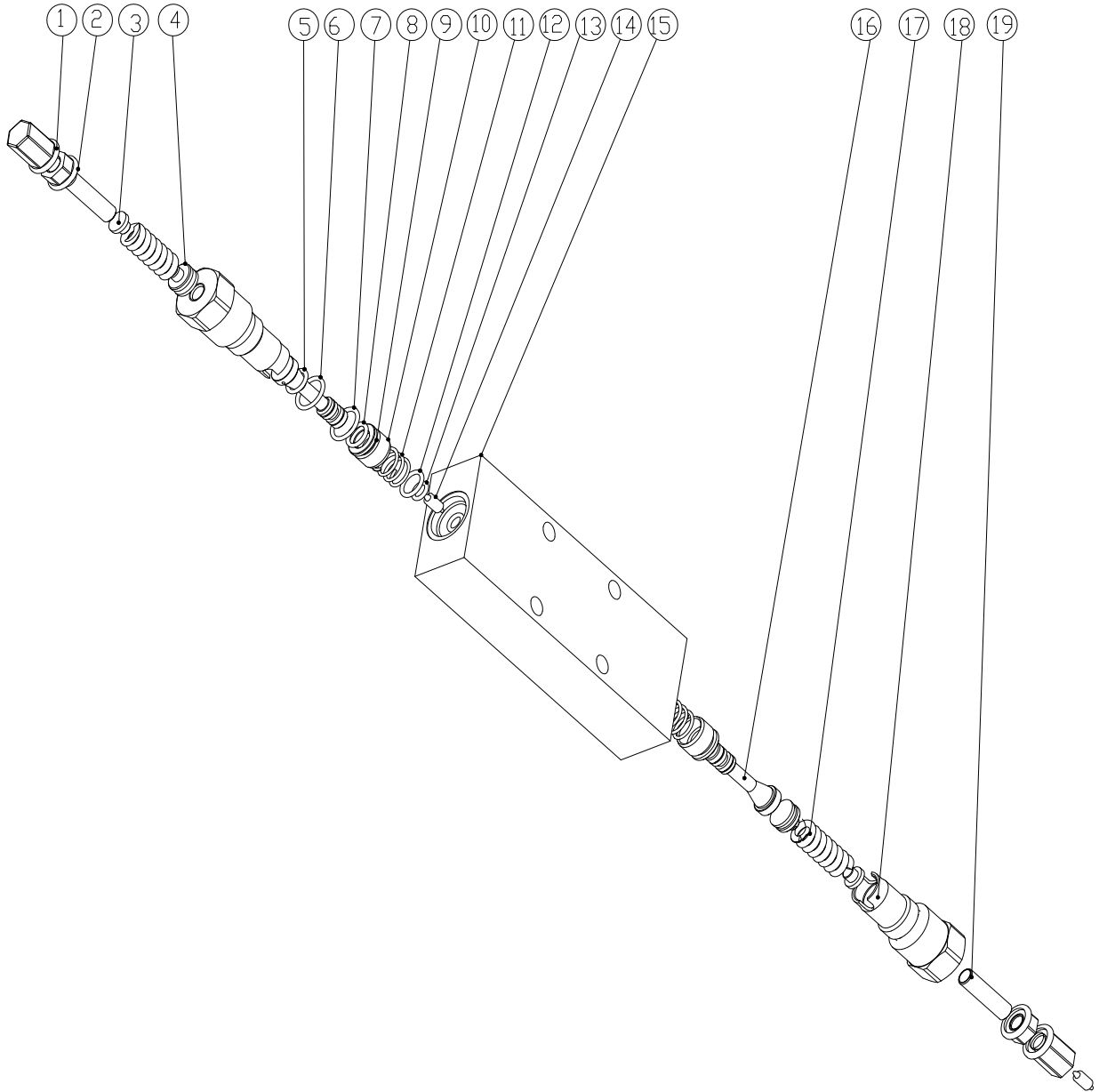


352100967 液压布管图 Hydraulic system layout





803007927 SSPHB50 双向平衡阀 Dual-balance valve



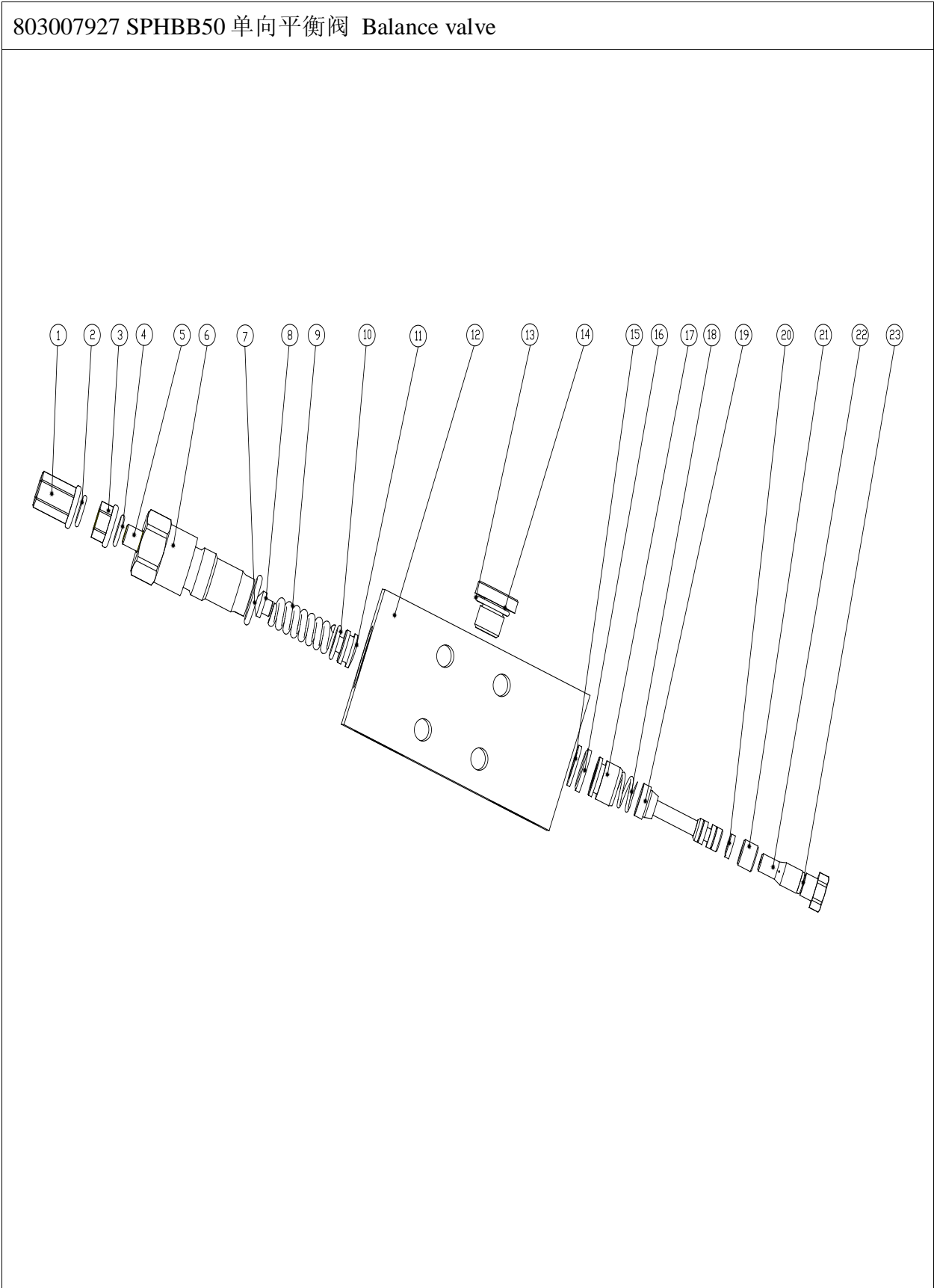


803007927 SSPHB50 双向平衡阀 Dual-balance valve

序号 No.	物料代码 Part number	名称 Part Name	推荐数量 Advised Q' ty	备注 Remark
1	—	螺帽 Nut	2	
2	—	密封扣紧螺母 Nut	2	
3	—	弹簧座 Spring block	2	
4	—	弹簧座 Spring block	2	
5	860117499	O 形圈 6×1.8 O-ring	2	GB3452.1-92
6	860117494	O 形圈 10×1.8 O-ring	2	GB3452.1-92
7	803176192	O 形圈 20×2.4 O-ring	2	GB1235-76
8	860117424	O 形圈 9×1.8 O-ring	4	GB3452.1-92
9	801100303	O 形圈 13.2×1.8 O-ring	2	GB3452.1-92
10	—	单向阀套 Valve sleeve	2	
11	—	弹簧 Spring	2	
12	—	垫圈 Cushion ring	2	
13	801100032	O 形圈 10.6×2.65 O-ring	2	GB3452.1-92
14	—	推杆 Push rod	1	
15	—	阀体 Valve bracket	1	
16	—	主阀杆 Valve rod	2	
17	—	弹簧 Spring	2	
18	—	阀套 Valve bush	2	
19	—	螺钉 M8×30 Screw	2	GB/T80-2000



803007927 SPHBB50 单向平衡阀 Balance valve



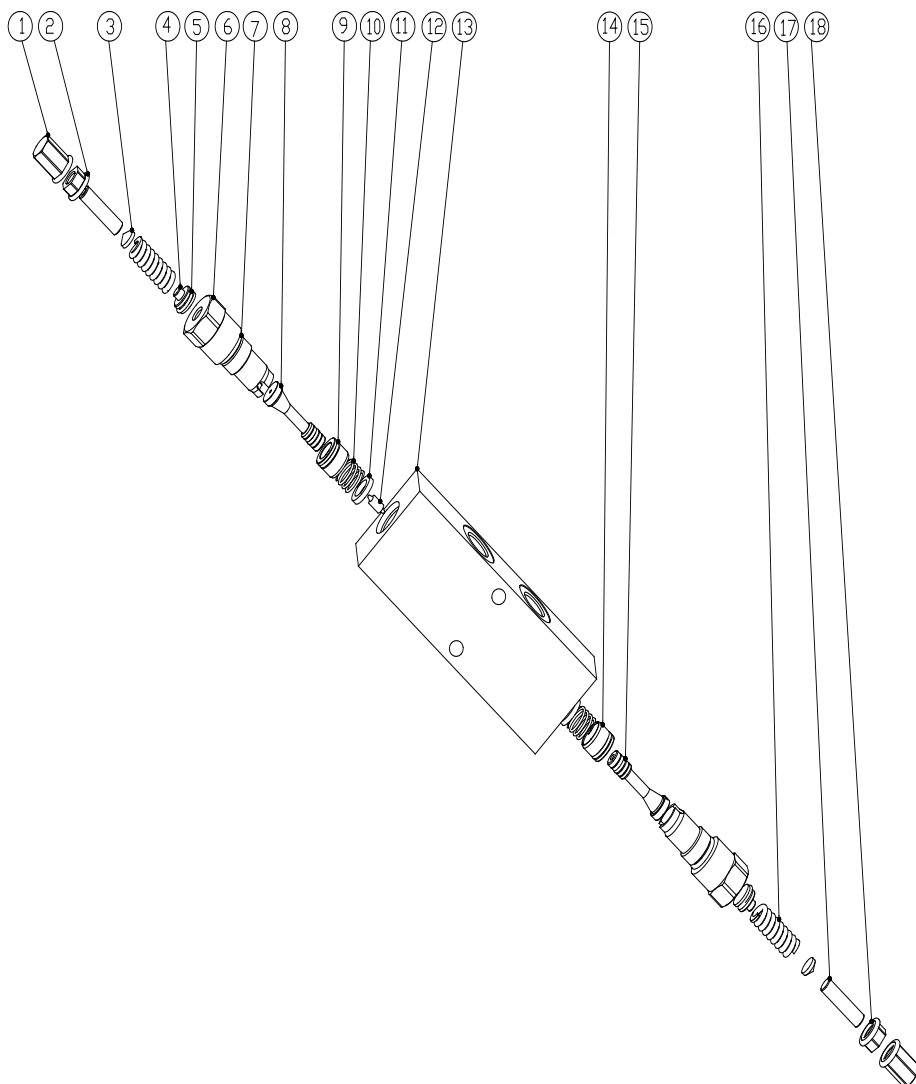


803007927 SPHBB50 单向平衡阀 Dual-balance valve

序号 No.	物料代码 Part number		推荐数量 Advised Q' ty	备注 Remark
1	—	螺母 Nut	1	
2	860117424	O 形圈 9×1.8 O-ring	1	GB3452.1-92
3	—	密封扣紧母 Nut	1	
4	801100032	O 形圈 10×2.65 O-ring	1	GB3452.1-92
5	—	螺钉 M8×30 Screw	1	GB/T80-2000
6	—	阀套 Valve bush	1	
7	803176192	O 形圈 20×2.4 O-ring	1	GB1235-76
8	—	弹簧座 Spring block	1	
9	—	弹簧 Spring	1	GB3452.1-92
10	860117494	O 形圈 10×1.8 O-ring	1	GB3452.1-92
11	—	弹簧座 Spring block	1	
12	—	阀体 Valve bracket	1	
13	—	螺堵 Plug screw	1	
14	803164177	O 形圈 14×1.8 O-ring	1	GB3452.1-92
15	—	垫圈 Cushion ring	1	
16	—	格莱圈 Glaz cushion	1	
17	—	单向阀套 Valve bush	1	
18	—	弹簧 Spring	1	
19	—	主阀杆 Valve rod	1	
20	—	格莱圈 Glaz cushion	1	



803008012 08441103023500B双向平衡阀 Dual-balance valve



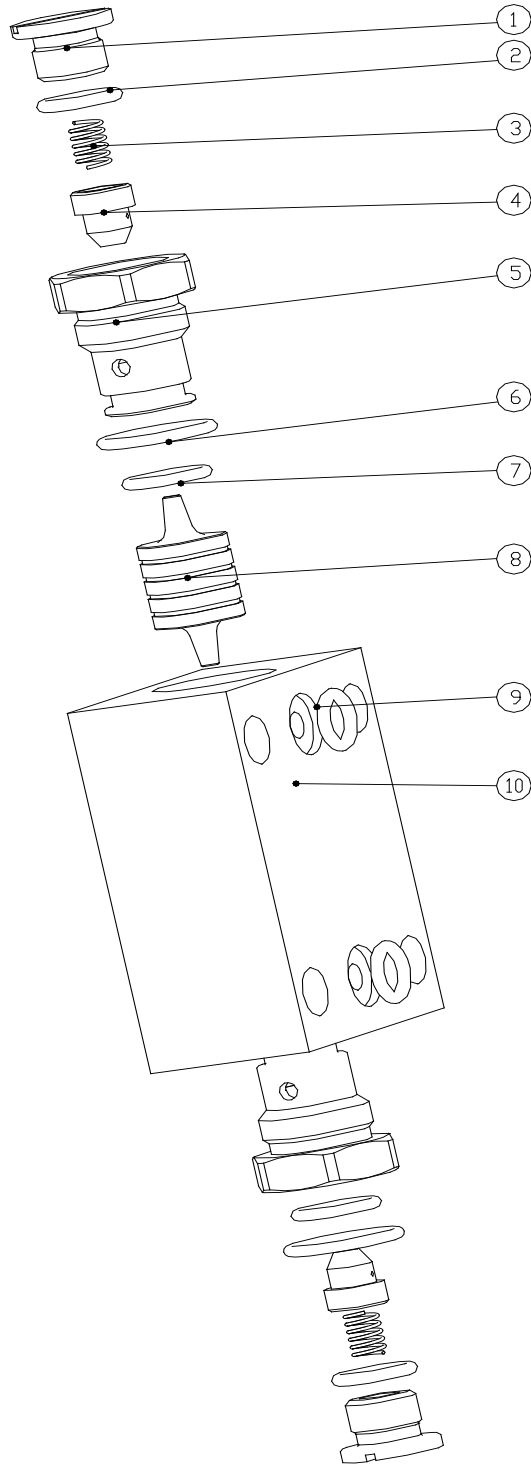


803008012 08441103023500B 双向平衡阀 Dual-balance valve

序号 No.	物料代码 Part number	名称 Part Name	推荐数量 Advised Q' ty	备注 Remark
1	—	螺帽 Nut	2	1
2	—	密封扣紧母 Nut	2	2
3	—	弹簧座 Spring block	2	3
4	—	弹簧座 Spring block	2	4
5	860117494	O形圈 10×1.8 O-ring	2	5
6	—	阀套 Valve bush	2	6
7	803176192	O形圈 20×2.4 O-ring	2	7
8	—	主阀杆 Valve rod	2	8
9	801100303	O形圈 13.2×1.8 O-ring	2	9
10	—	弹簧 Spring	2	10
11	—	垫圈 Cushion ring	2	11
12	—	推杆 Push rod	1	12
13	—	阀体 Valve bracket	1	13
14	—	单向阀套 Valve sleeve	2	14
15	860117499	O形圈 6×1.8 O-ring	2	15
16	—	弹簧 Spring	2	16
17	—	螺钉 M8×30 Screw	2	17
18	860117424	O形圈 9×1.8 O-ring	4	18

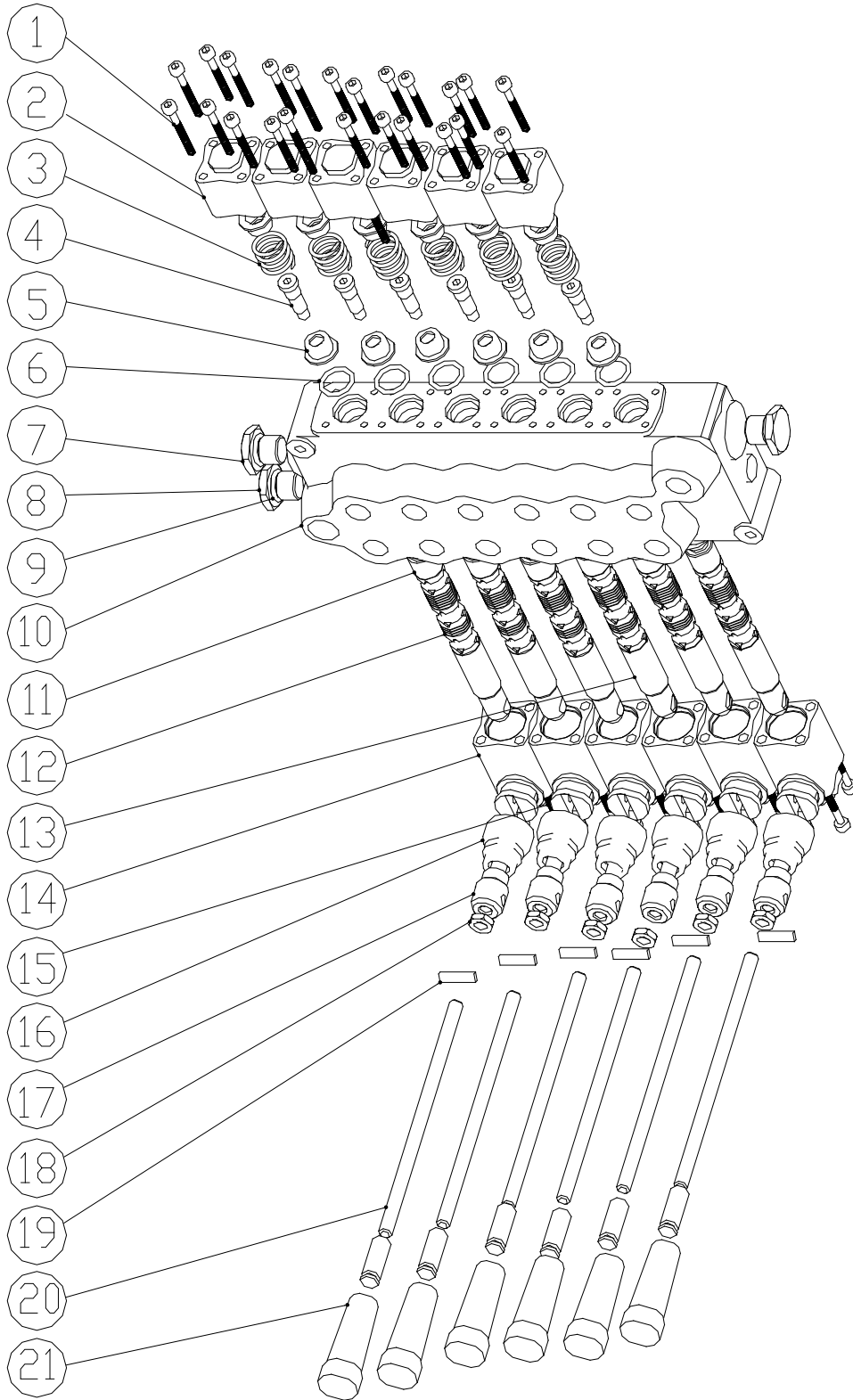


803008012 SO-K8L-J7 双向液压锁 Hydraulic lock





803008084 HC-D10/6(OOYYOYO)多路阀 Multichannel valve





803008084 HC-D10/6(OOYYOYO)多路阀 Multichannel valve

序号 No.	物料代码 Part number	名称 Part Name	推荐数量 Advised Q' ty	备注 Remark
1	—	螺钉 M5×40 Screw	24	JB/T70.1-2000
2	—	定位置 Locating device	6	
3	—	弹 簧 Spring	6	
4	—	定位杆 Locating rod	6	
5	—	弹簧座 Spring block	12	
6	803192113	O 形圈 17×2.65 O-ring	12	GB/T3452.1-92
7	—	螺 塞 Piston	1	
8	—	螺 堵 Piston	1	
9	803193097	O 形圈 14×2.65 O-ring	1	GB/T3452.1-92
10	—	阀 体 Valve bracket	1	
11	—	尼龙挡圈 Check ring	6	
12	—	阀杆 (1) Valve rod I	4	
13	—	阀杆 (2) Valve rod II	2	
14	—	阀 体 Valve bracket	1	
15	—	螺钉 M5×55 Screw	24	JB/T70.1-2000
16	—	防尘套 Dustproof bush	6	
17	—	防尘套 Dustproof bush	6	
18	—	拉 头 Pull-rod	6	
19	—	螺母 M8 Nut	6	GB/T6172.1-2000
20	—	手柄杆 Handle rod	6	
21	—	手柄 Handle	6	

地址：中国江苏徐州市驮蓝山路 55 号

Add: No. 55, Tuolanshan Road, Xuzhou City, Jiangsu Province, China

电话 (Tel): +86-516-4001109999

传真 (Fax): +86-516-4001109999

邮编 (Post Code): 221004

服务电话 (Service Tel): +86-516-83466826

: +86-516-83665573

服务传真 (Service Tel): +86-516-83466892

质量监督电话 (Quality Inquiry Tel): +86-516-4001109999

备件电话 (Spare Parts Tel): +86-516-87892881

: +86-516-87892963

版权所有 侵权必究

(All rights reserved, violators will surely be prosecuted)